

STATE OF THE CITY 2013

Mayor Nancy Parent

Presented by:

Joe Sbranti, City Manager

Garrett Evans, Assistant City Manager

Tina Olson, Director of Finance

Chief Brian Addington, Police Services



CITY COUNCIL



Nancy Parent, Mayor



Sal Evola, Vice Mayor



Pete Longmire, Council Member



Will Casey, Council Member



Ben Johnson, Council Member

Overview

Nancy Parent, Mayor



PRIDE IN

Pittsburg

CA

DELTA DIABLO RECEIVES NATIONAL AWARDS

**2012 Achievement of
Excellence in Procurement –
National Purchasing Institute.**

**2012 Occupational Excellence
Achievement Award –
National Safety Council**



Delta Diablo Sanitation District

Safeguarding and Enhancing the Environment of the Communities We Serve

Citywide Improvements

Joe Sbranti, City Manager



NEIGHBORHOOD IMPROVEMENT TEAM



INFRASTRUCTURE PROJECTS



LIBRARY EXPANSION



PLANNED PARKS

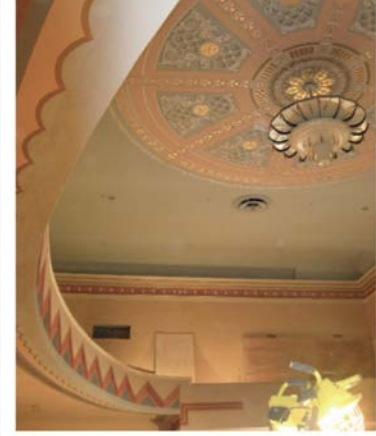
San Marco



Old Town Plaza



CALIFORNIA THEATRE



SR4 / EBART



Citywide Development & Projects

Garrett Evans, Assistant City Manager



HOUSING DEVELOPMENT

San Marco



Alves Ranch



BUSINESS RETENTION & EXPANSION



TARGET

BUSINESS ATTRACTION



DELTA WIND SPORTS



COLUMBIA
solar





ENTERPRISE



ZONE



SOLAR, ENERGY AND CONSTRUCTION
TRADES TRAINING PROGRAM

WATERFRONT



PITTSBURG POWER COMPANY

A collage of images related to power generation and transmission. On the left, a tall electrical transmission tower stands against a dramatic sky with clouds and a low sun. On the right, several white wind turbines are situated on rolling green hills under a cloudy sky. The entire collage is overlaid with a semi-transparent white effect.

**GATES-GREGG
TRANSMISSION**

2013 SUMMER EVENT SERIES

Classic Car Show

June 27 | July 11 | July 25 | Aug 8 | Aug 22 | Sept 12 | Sept 26
 Old Town Pittsburg, Railroad Avenue, 4th to 6th Streets
 \$10.00 Entry Fee Per Vehicle

www.oldtownpittsburgca.com



4th Of JULY
Fireworks At Dusk
Pittsburg Marina

old town pittsburg
culinary
crawl

June 20 th	July 18 th	August 1 st	August 15 th	August 29 th	September 19 th

Call 925-252-4860 For More Information • Purchase Tickets at Railroad Book Depot - 650 Railroad Avenue

Financial Overview

Tina Olson, Director of Finance &
Administration



FISCAL SUSTAINABILITY ORDINANCE

Adopted by City Council in January of 2013

1. Minimum reserve balances at 30% of operating expenses for the City's major funds to be used only for emergencies such as natural disasters.
2. Budget Stabilization Fund to be used to help absorb costs during an economic downturn with a minimum balance equal to \$1.5 million or 5% of the General Fund operating expenses and a maximum balance of \$7.5 million or 25% of the General Fund operating expenses.

Deposit one-time General Fund revenues, projected recurring revenues that exceed 8% or more from the previous fiscal year, and fiscal year-end General Fund surpluses into the Budget Stabilization Fund.

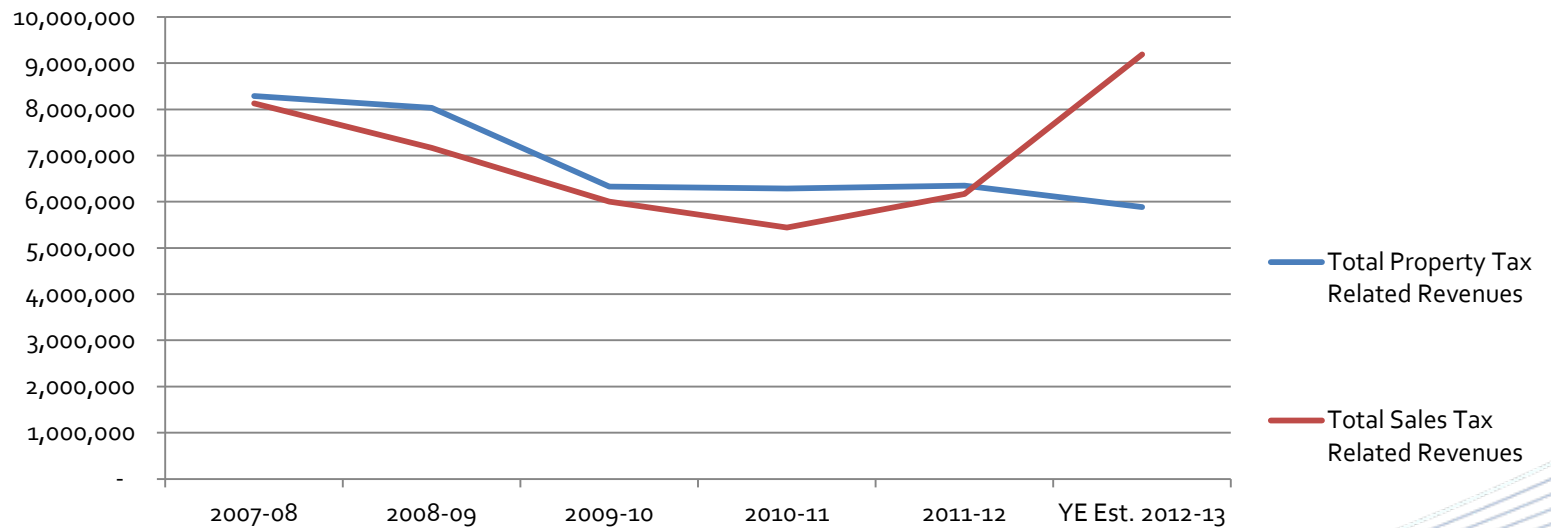
FISCAL SUSTAINABILITY ORDINANCE

4. NEW Infrastructure Repair and Replacement and Other Post-employment Benefits (OPEB) Funds to receive surplus Budget Stabilization Fund monies

The goal of the Ordinance is to ensure the City has sufficient reserves to cover expenses in the event of an emergency and that it uses one-time revenues for one-time expenses.

SUMMARY OF PROPERTY AND SALES TAX RELATED REVENUE (FYs 2007-08 thru 2012-13)

Revenue	2007-08	2008-09	2009-10	2010-11	2011-12	YE Est. 2012-13
Total Property Tax Related Revenues	8,288,598	8,033,472	6,330,034	6,282,790	6,346,554	5,885,493
Total Sales Tax Revenues	8,127,715	7,167,394	5,998,652	5,438,354	6,168,600	9,191,000



PITTSBURGH UNEMPLOYMENT

Unemployment

➤ June 2011	17.0%	
➤ April 2012	14.5%	
➤ December 2012	13.1%	
➤ May 2013	11.3%	↓

HOUSING MARKET

Median Home Price

December 31, 2011	174,099
December 31, 2012	220,000
Year Over Year Difference	45,901
Percent Difference	26%
May 30, 2012	192,600
May 30, 2013	245,000
Year Over Year Difference	52,400
Percent Difference	27%

HOUSING MARKET

Average Days on Market

December 31, 2011	42
December 31, 2012	20
Difference	22
Percent Difference	-52%

Foreclosed Properties Sold

2009	1,124
2010	676
2011	647
2012	462

HOUSING MARKET

Housing Inventory - Months Supply

December 31, 2011	1.8
December 31, 2012	1
Difference	-0.8
Percent Difference	-44%



Police Services

Police Chief Brian Addington



POLICE DEPARTMENT

- 70 Sworn
- 16 Civilian
- 5 Reserves



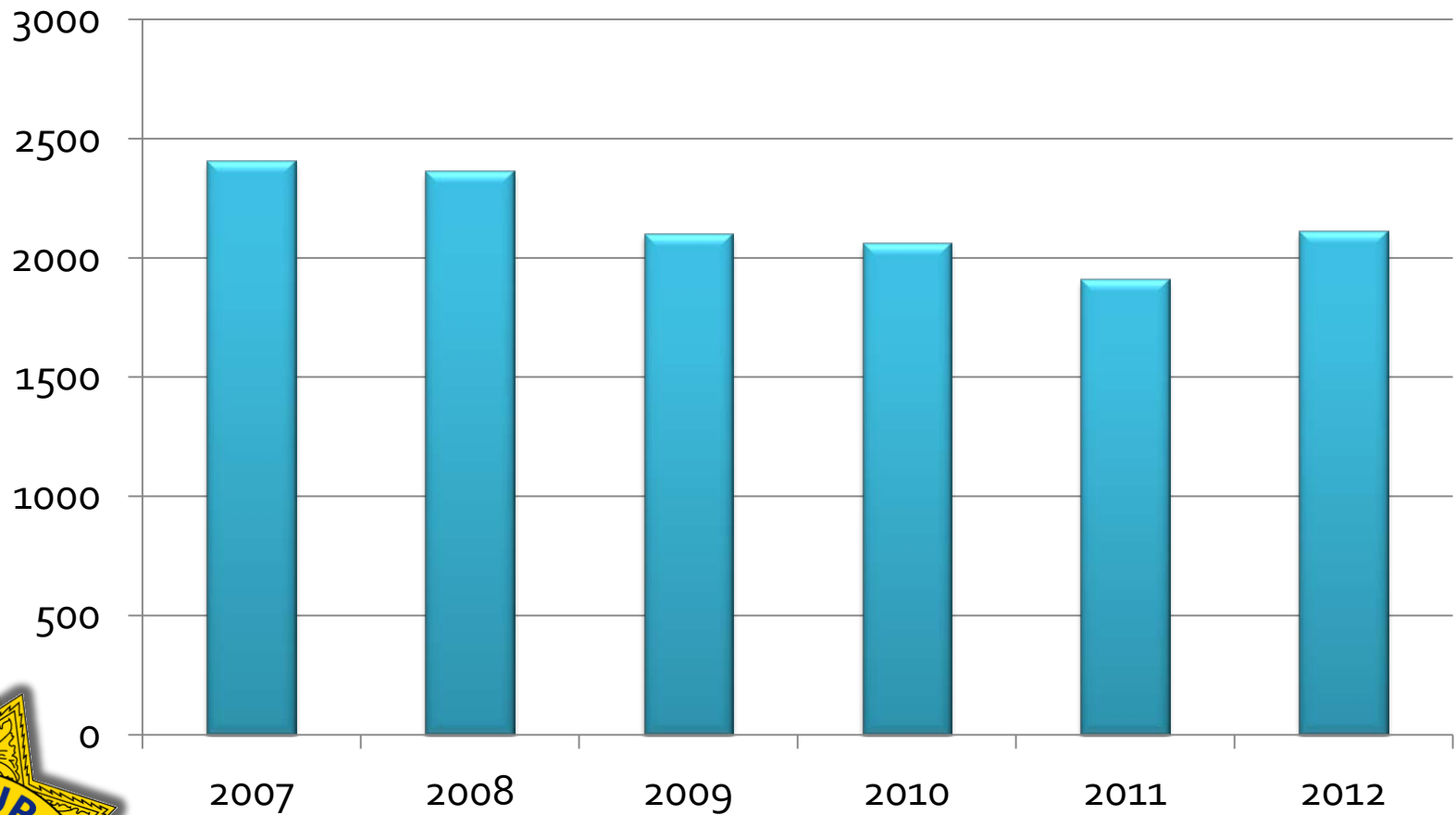
CALLS FOR SERVICE AND ARRESTS

2009	2010	2011	2012
71,514 calls for service	68,371 calls for service	69,576 calls for service	66,145 Calls for service
3,830 total arrests 3,561 adult arrests 269 juvenile arrests	3,770 total arrests 3,526 adult arrests 244 juvenile arrests	4,798 total arrests 4,545 adult arrests 253 juvenile arrests	3,968 total arrests 3,750 adult arrests 218 juvenile arrests

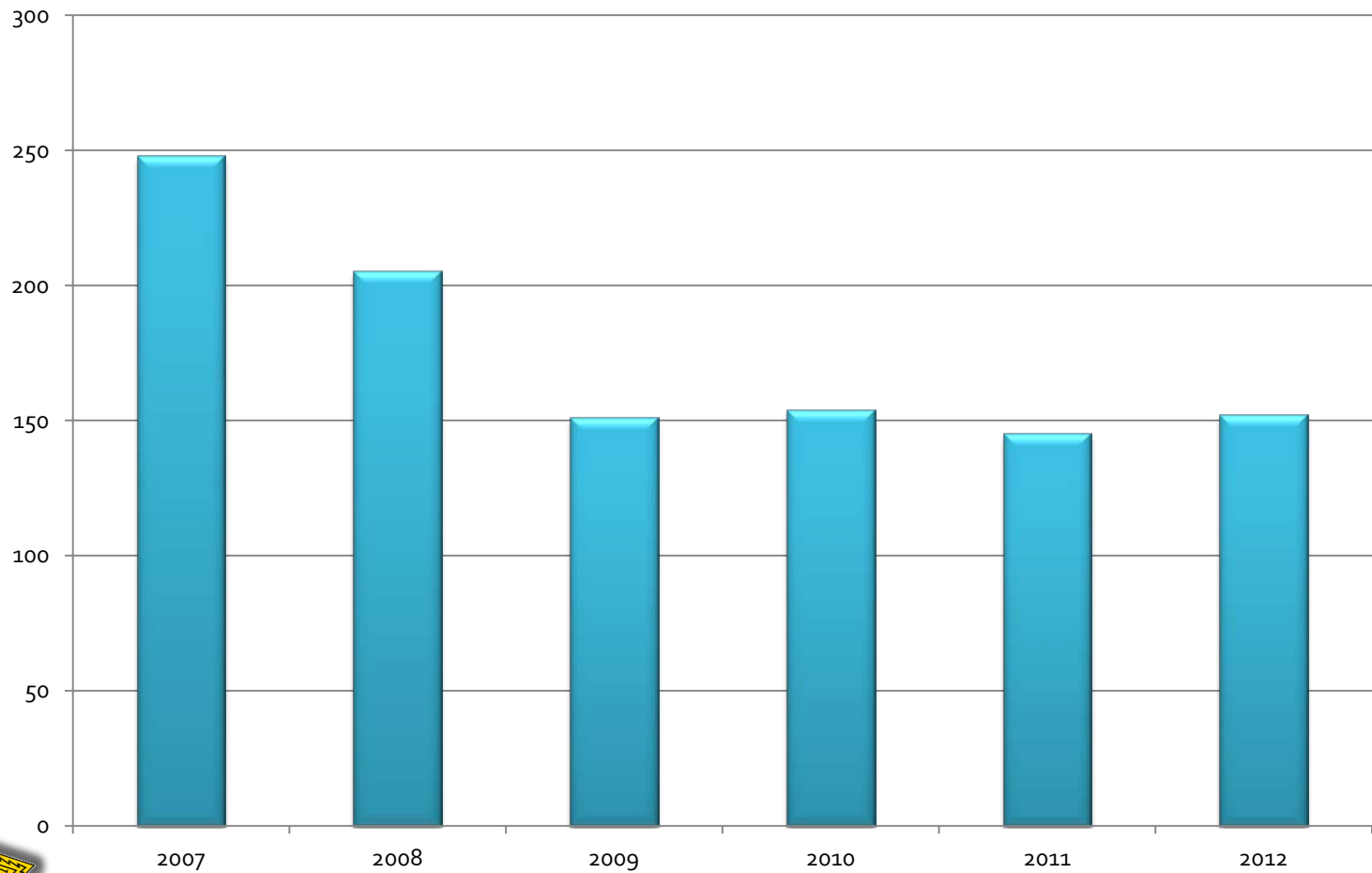
- **15,440 calls for service 1st quarter 2013**
- **852 total arrests during the 1st quarter**
 - 803 adult arrests
 - 49 juvenile arrests



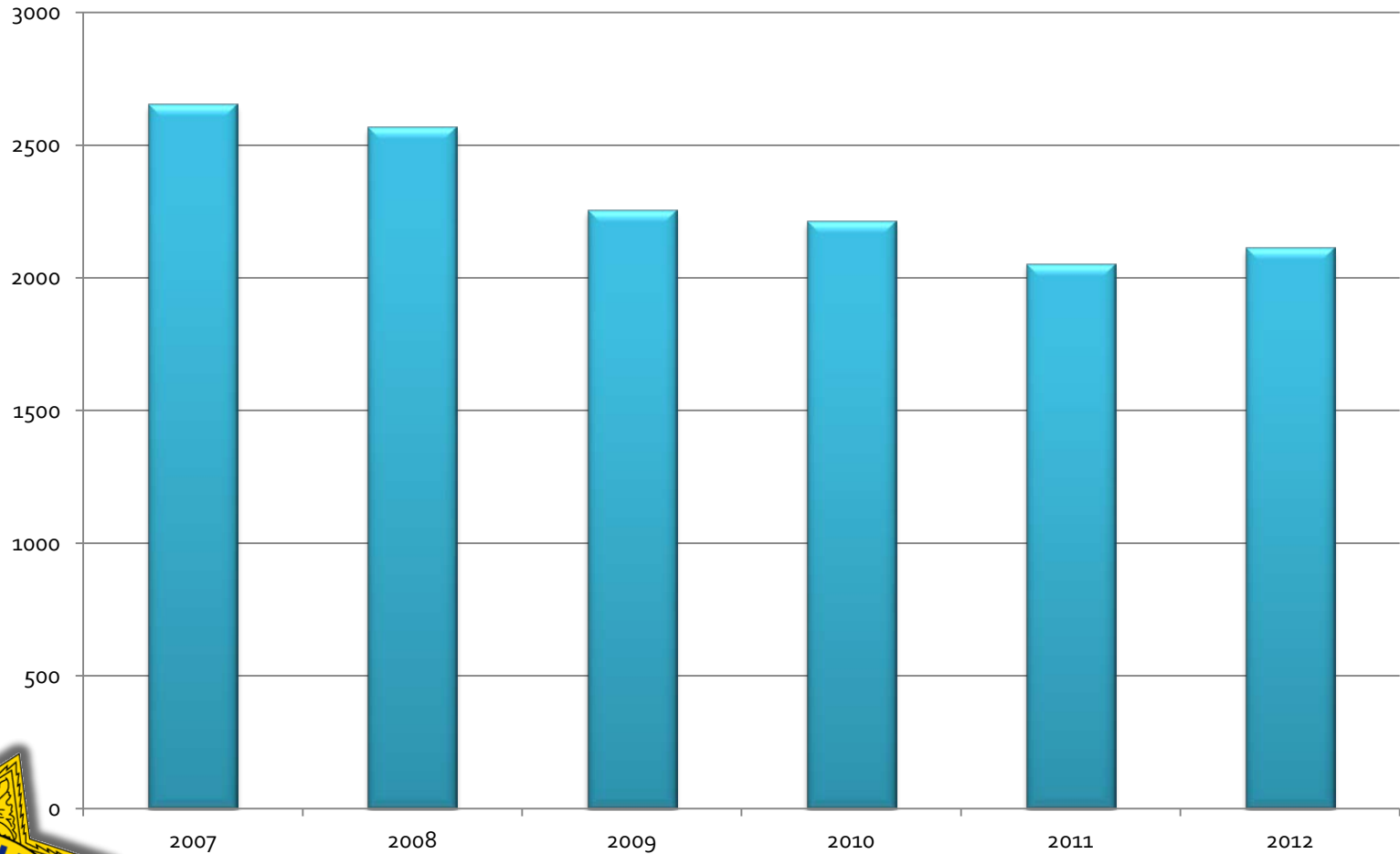
PROPERTY CRIMES



VIOLENT CRIMES

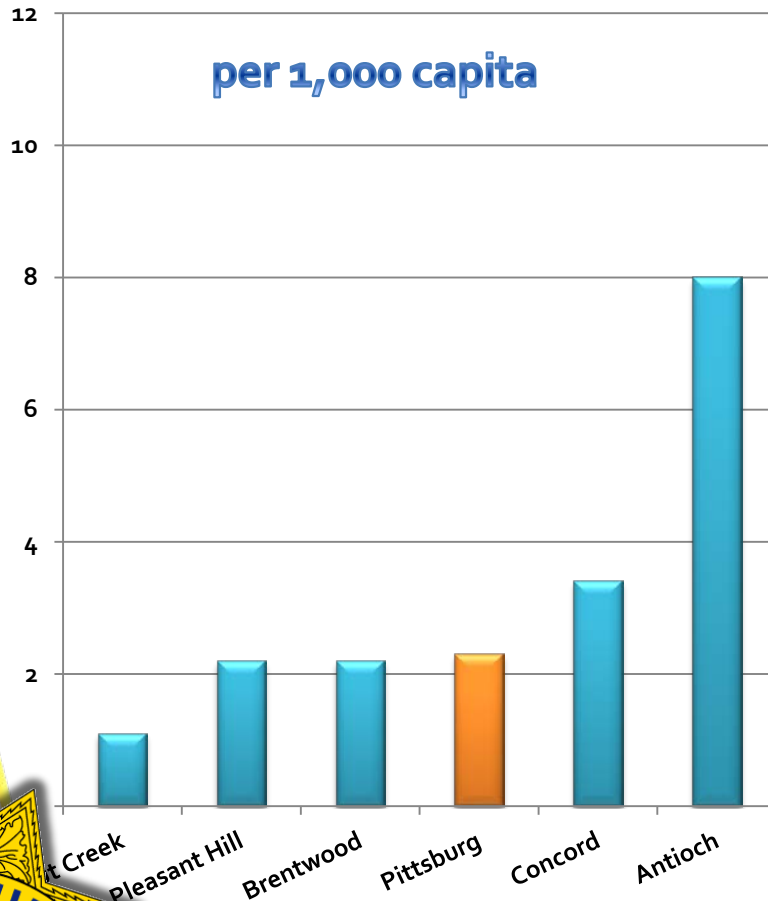


PART I CRIMES (VIOLENT & PROPERTY)

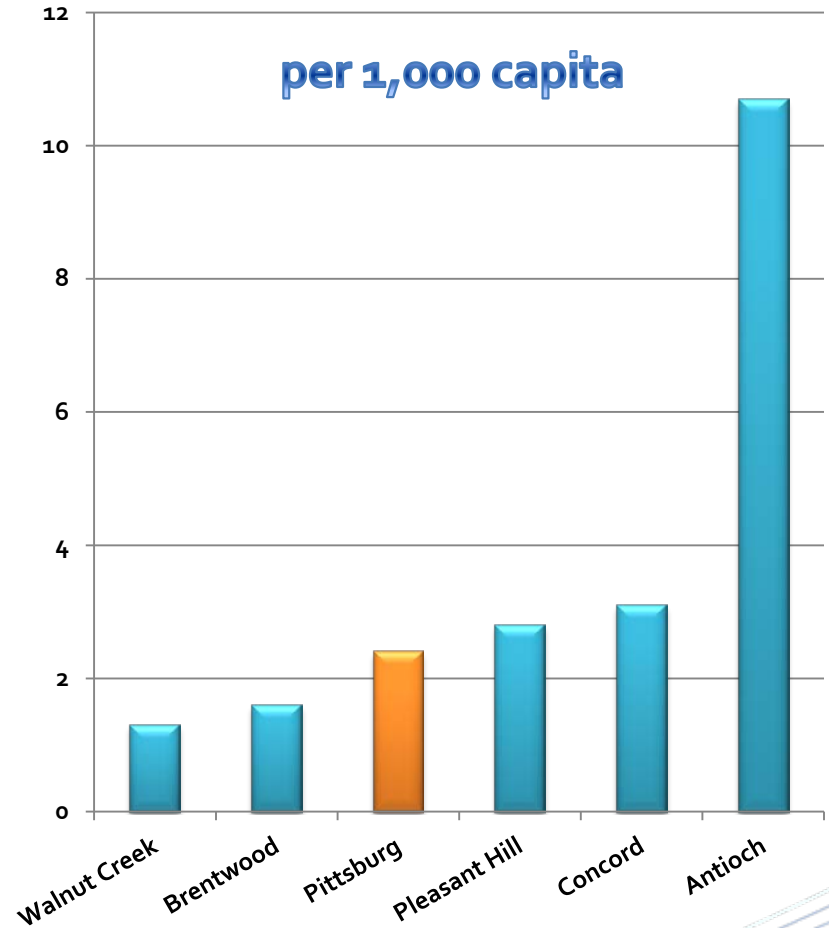


VIOLENT CRIME COMPARISON

2011

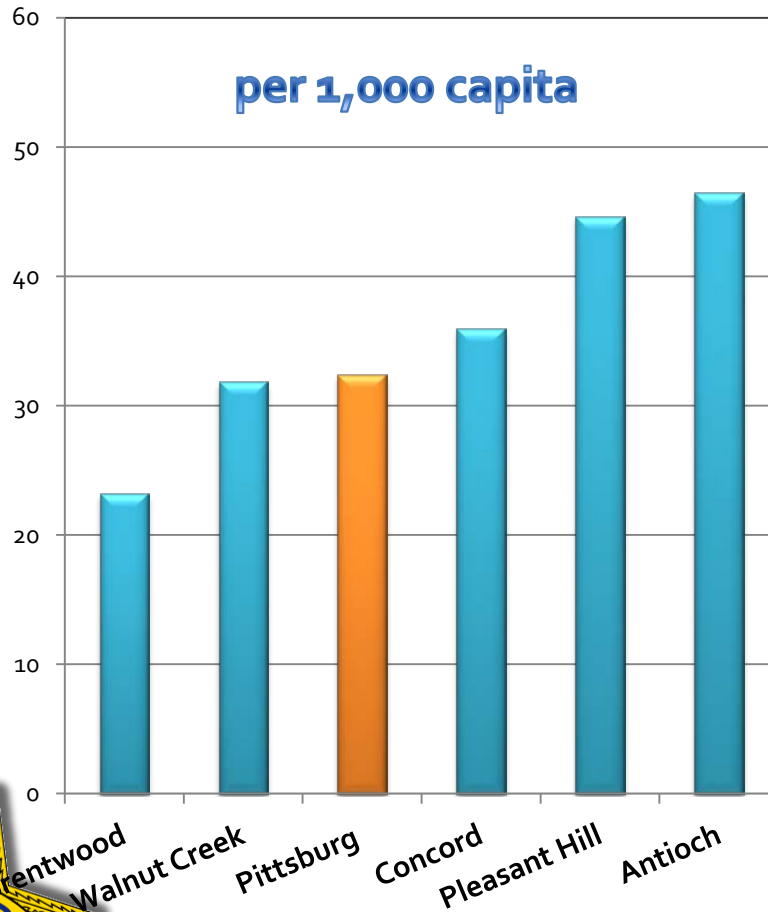


2012

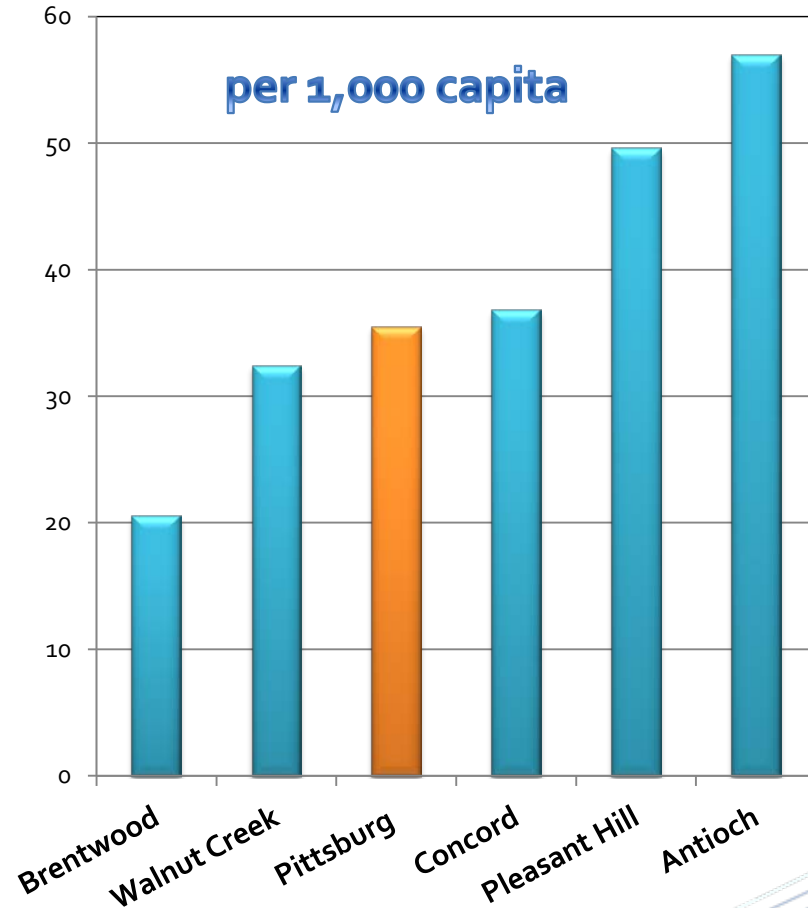


PART I CRIME COMPARISON

2011



2012



CODE ENFORCEMENT

2011 Statistics	Complaints	Voluntary Compliance
Public Nuisance	119	101
Weeds, Rubbish, Garbage	618	574
Zoning Violations	306	292
Vehicle Code Violations	355	279
TOTALS	1,368	1,246 (91%)



REDUCING GUN VIOLENCE

- Gun Buyback



- Collaborative Anti-Violence Support Effort (CASE) Team



**PITTSBURG - BAY POINT
ANONYMOUS
GUN BUYBACK
TURN IN YOUR GUNS**

RECEIVE UP TO \$200 CASH (While supplies last)
FOR HANDGUNS,
SHOTGUNS & RIFLES

RECEIVE UP TO \$300 CASH
FOR ASSAULT WEAPONS AS CLASSIFIED
IN THE STATE OF CALIFORNIA

RECEIVE UP TO \$50 CASH FOR NON-OPERATIONAL FIREARMS.
Although there is no limit to the amount of firearms an individual can turn in,
we will only pay for up to 3 firearms.

PLEASE TRANSPORT YOUR FIREARMS UNLOADED AND IN THE TRUNK OF YOUR VEHICLE

**SATURDAY, MARCH 16, 2013
10:00 A.M. TO 4:00 P.M.**

PITTSBURG CITY HALL FOR MORE INFORMATION
65 Civic Avenue
Pittsburg, CA 94565

925-252-4811

Buyback is only open to residents of Pittsburg and Bay Point
NOTE: Proof of residency will be California ID, Driver's License, Utility Bill, etc.
Pittsburg PD will NOT be checking for warrants

BROUGHT TO YOU BY:

The bottom of the poster features logos for the participating organizations: Pittsburg Police, Pittsburg Fire Department, Pittsburg Fire Station, City of Pittsburg, and SOULAB.



COMMUNITY PARTNERSHIP AGENCY COLLABORATION

- Alarm Companies
- Business Watch
- Office of the District Attorney
 - Community Based Prosecution Program



COMMUNITY PARTNERSHIP AGENCY COLLABORATION

- Pittsburg Unified School District



OUTSIDE FUNDING SOURCES

Office of Traffic Safety	\$ 65,000
Office of Traffic Safety	\$ 27,000
Community Corrections Partnership	\$132,500
Alcohol Beverage Control	\$100,000

COPS

Cops Hiring Program	\$ 375,000
Community Policing Development	\$ 500,000
Community Policing Development Micro Grant	\$ 50,000



The Road Traveled

Nancy Parent, Mayor



THE ROAD TRAVELED

City Council, City Staff, Businesses and Residents Worked Together to Accomplish:

- Reduction of Blight
- Higher Standard in Quality of Life
- Continued Reduction in Crime
- Expanded Economic Development
- Job Creation

We Are...

TEAM PITTSBURG





QUESTIONS & ANSWERS