



AGENDA

COMMUNITY AND ECONOMIC DEVELOPMENT SUBCOMMITTEE

Wednesday, April 10, 2024
5:00 PM

City Hall
First Floor Conference Room, 4B
65 Civic Avenue
Pittsburg, CA 94565

Subcommittee Members

Jelani Killings, Vice Mayor
Dionne Adams, Councilmember

Planning Commission Representatives on Land Use

Ivelina Popova, Commissioner
Elissa Robinson, Commissioner

1. Public Comment for Non-Agenda Items

Waterfront Development (*Vice Mayor Killings, Councilmember Adams*)

- Delta Adapts: Climate Adaption Plan for the Sacramento-San Joaquin Delta, by the Delta Stewardship Council.** Delta Adapts is the Delta Stewardship Council's climate initiative consisting of a climate change vulnerability assessment and an Adaptation Plan (for the Sacramento-San Joaquin Delta. The Adaptation Plan will include information and strategies that can be used to help Delta communities plan for climate impacts with a focus on human safety and wellbeing, flood protection and water supply, climate-resilient agriculture, and habitat protection/restoration. A public draft of the Adaptation Plan will be released in May 2024 for a 60-day public comment period. *Subcommittee feedback requested.*

Economic Development (*Vice Mayor Killings, Councilmember Adams*)

- Project Updates.** Staff will provide an update on current development projects and programs. *Subcommittee feedback requested.*
- Pittsburg Chamber of Commerce Report**
- Subcommittee and Staff reports or remarks**
- Adjournment**

April 2024

Delta Adapts

Climate Adaptation Plan for the Sacramento-San Joaquin Delta

Dan Constable, Environmental Program Manager
Annie Merritt, Environmental Scientist



Delta
Stewardship
Council

A CALIFORNIA STATE AGENCY

What is the
Delta
Stewardship
Council?



Council Role and Activities

Implementing the Delta Plan

- Covered action authority
- Delta Plan Interagency Implementation Committee
- Performance measures

Amending the Delta Plan

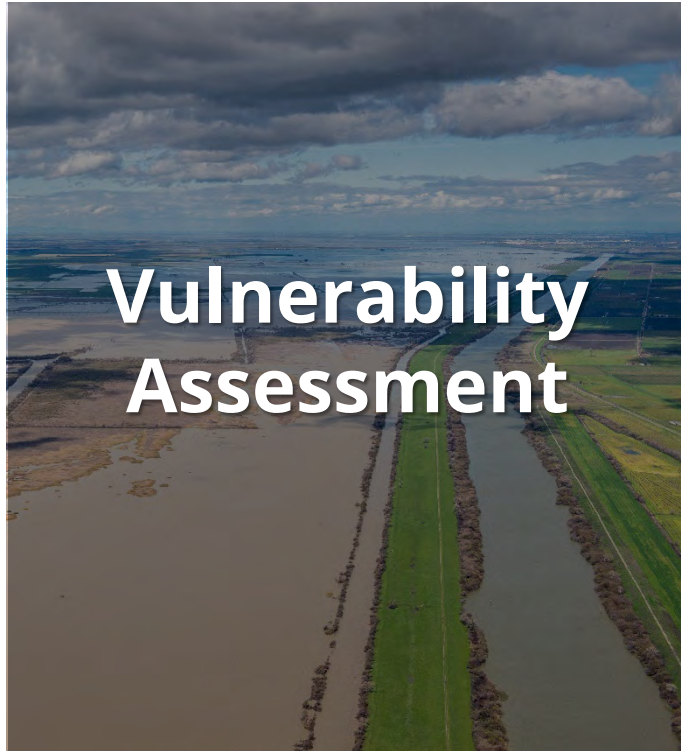
- Setting priorities for state investment in Delta levees
- Promoting options for water management
- Weaving together a plan for ecosystem enhancement

Connecting decision-makers with the best science

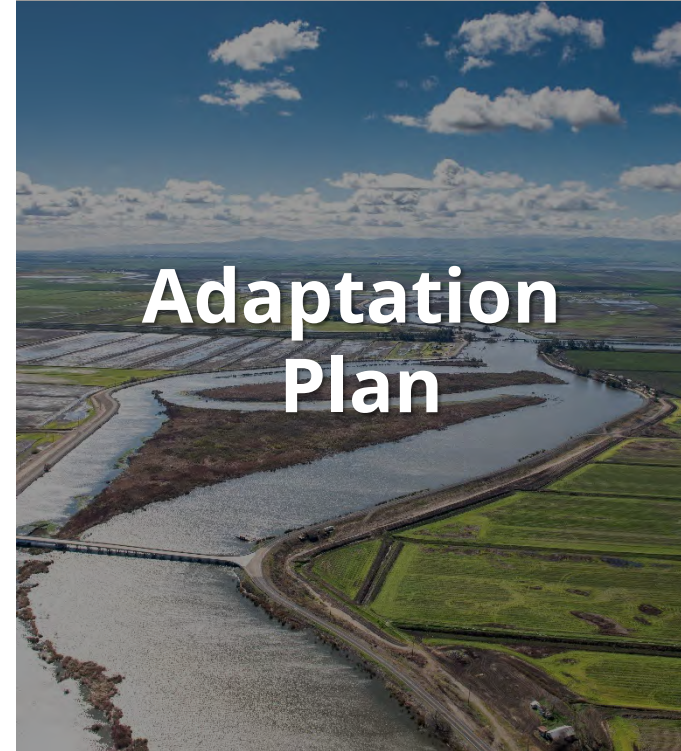
- Synthesis, peer review, identifying and funding high-priority science



Delta Adapts =

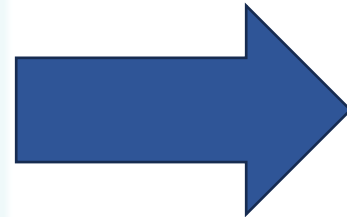
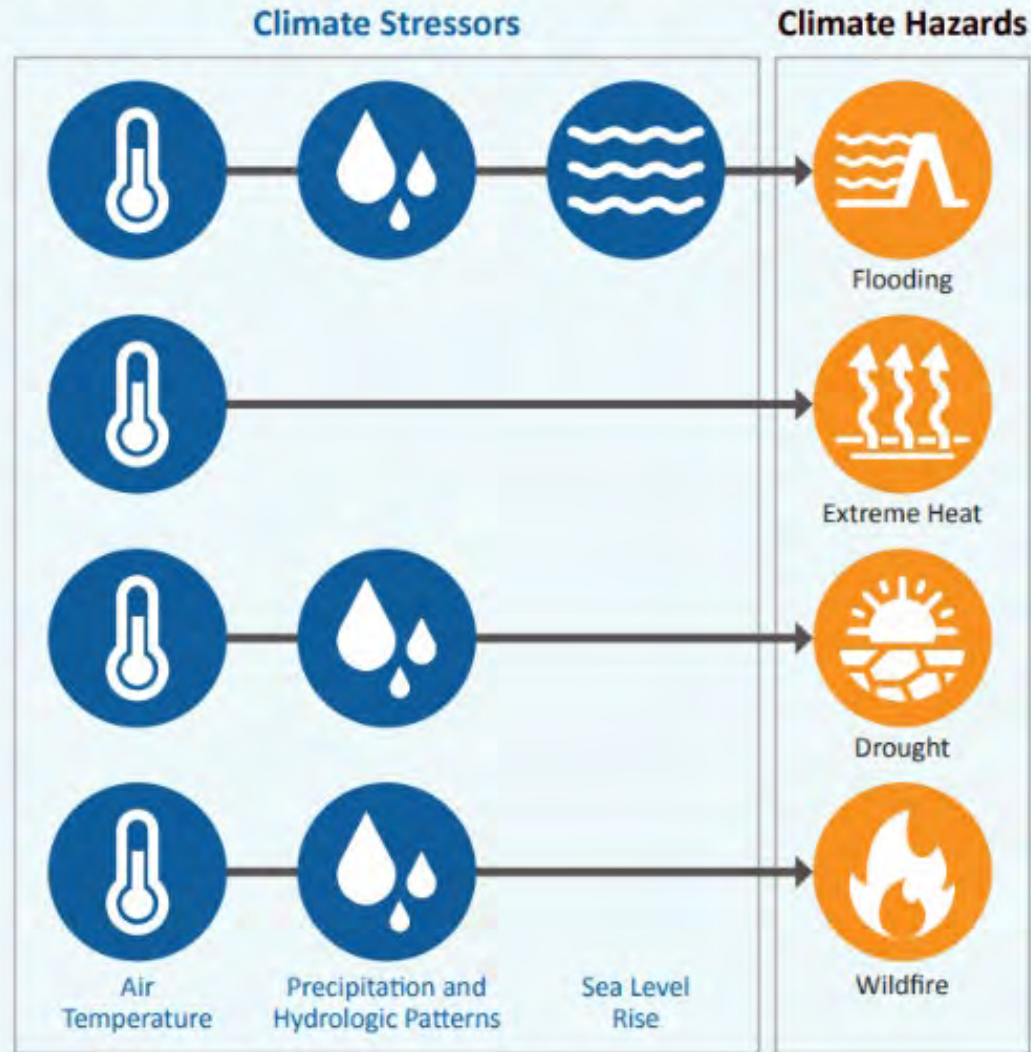


+



Delta Adapts Overview

What is the Vulnerability Assessment?



Stakeholder Input

- Technical focus groups
- Community organizations
- Environmental justice expert group
- Farmers & landowners
- Delta Residents Survey
- Tribes



Vulnerability Assessment Findings

- More flooding will occur
- Less reliable Delta exports
- Episodic water quality declines for in-Delta users
- Increased loss and stress on ecosystems
- More frequent/severe wildfires leading to hazardous AQ conditions
- Decreased agricultural yields



Extreme Heat



Wildfire



Drought



Flooding



**EXTREME
HEAT**

By 2050, increased temperatures in Pittsburgh will lead to:



- **18** extreme heat days per year
- More **unhealthy** ozone days



Increased **cooling costs** for homes and businesses



Heat stress on landscapes and ecosystems

Urban areas like Pittsburgh will experience relatively more extreme heat days due to the **urban heat island effect**.



WILDFIRE

By 2050, increased temperatures, more frequent drought, and wind changes will:



Increase the size and severity of remote wildfires, which will...



Increase the frequency and duration of **poor air quality days**



FLOODING

By 2050, a 100-year flood event in Pittsburgh could impact:



- **1,060** residents
- **80%** live in areas with high social vulnerability



- **3** parks



- **4** contaminated sites

Key Climate Vulnerabilities and Adaptation Priorities in Pittsburg

Key climate vulnerabilities



Increased flood risk: By 2085, at least 2,000 additional people will be at risk of flooding compared to 0 people today.



Extreme heat: The number of extreme heat days above 101° will increase this century.



Wildfire: Pittsburg will likely experience more poor air quality events due to increased frequency and severity of remote wildfires.

Key adaptation priorities

- » Coordinate with other agencies on adaptation efforts.
- » Prioritize adaptation for vulnerable communities.
- » Protect shoreline infrastructure from sea level rise and climate hazards.
- » Maximize public shoreline access and increase park resilience.
- » Address drinking water issues, trash in waterways, and food insecurity.
- » Train youth on climate impacts and adaptation.

Regional-level adaptation strategies

Agriculture Strategies:

Equitable food system

Climate-smart farming

Diversification of revenue
on agricultural land

Strategic land retirement

Ecosystem Strategies:

Improve capacity of ecosystems to
adapt and thrive

Build capacity and partnerships for
ecosystem resilience

Protect ecosystems by halting and
reversing subsidence

Enhance urban ecosystem health

Regional-level adaptation strategies continued

Water Supply Strategies:

Reduce reliance on the Delta through conservation local water supply development

Increase storage of surface and groundwater supplies

Modify reservoir operations

Modify water quality standards

Modify water infrastructure

Flood Risk Reduction Strategies:

Develop climate-informed understanding Delta flood dynamics

Strengthen and upgrade Delta levee system

Restore ecosystems for flood mitigation

Improve emergency preparedness and risk communication

Manage and expand upstream water storage capability

Use adaptive urban planning and farming practices to reduce risk

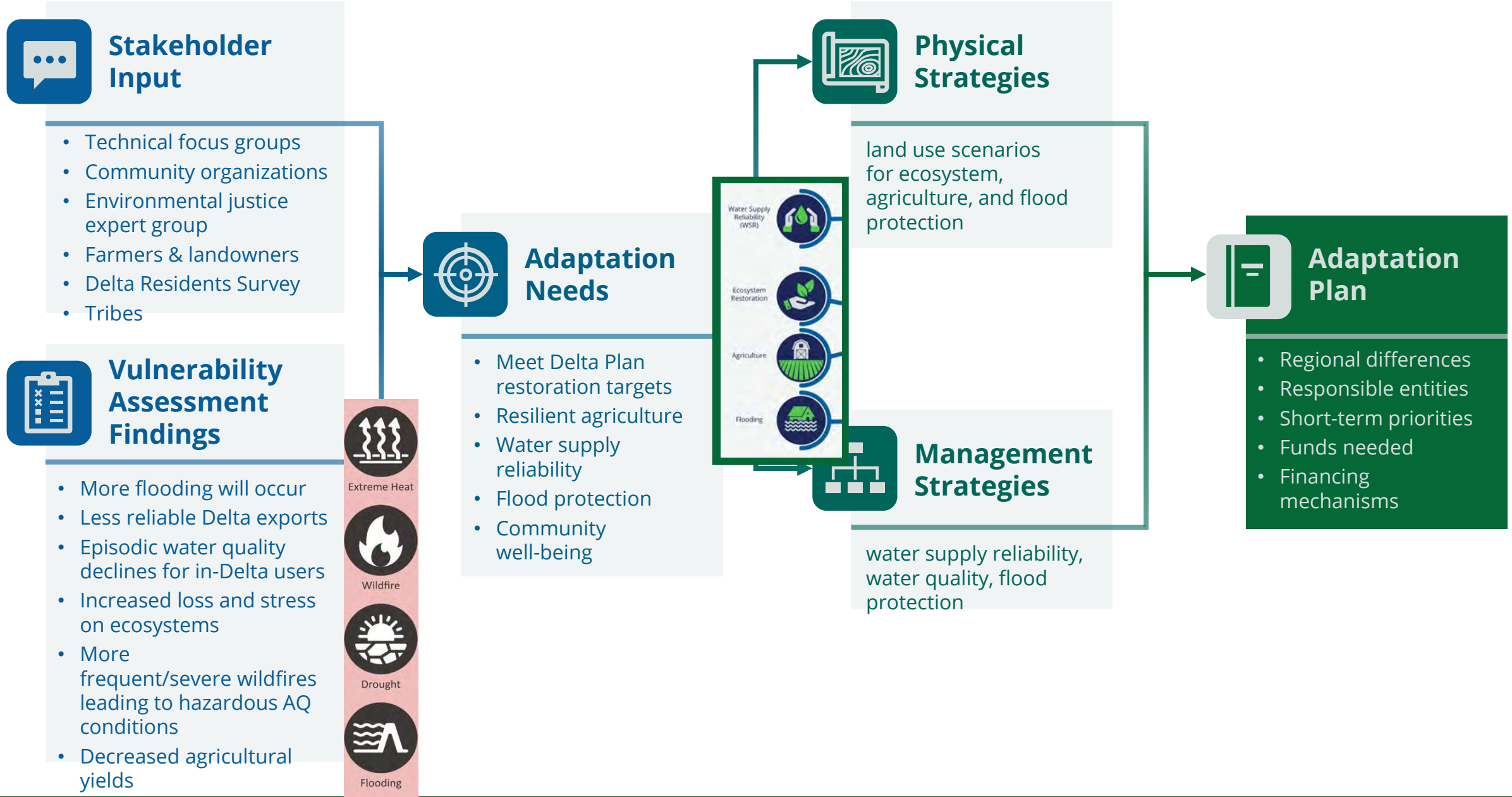
Equity in Adaptation

- Representational justice
- Prioritize adaptation investments in communities most socially vulnerable to climate impacts
- Culturally appropriate risk communication and education campaigns



Photo: DWR

Delta Adapts Adaptation Plan



Discussion Questions

- What are your initial reactions to the information presented?
- Do these adaptation priorities resonate with you?
- Are there other concerns related to climate change in Pittsburgh that you'd like to see reflected in the Adaptation Plan?

Thank you!

climatechange@deltacouncil.ca.gov



Scan the QR code
to subscribe to our
listserv



[@DeltaCouncil](https://twitter.com/DeltaCouncil)



[@deltastewardshipcouncil](https://www.instagram.com/deltastewardshipcouncil)



Scan the QR code to visit the
Delta Adapts webpage:
deltacouncil.ca.gov/delta-plan/climate-change



[Delta Stewardship Council](https://www.linkedin.com/company/delta-stewardship-council)



Deltacouncil.ca.gov



[@deltastewardshipcouncil](https://www.facebook.com/deltastewardshipcouncil)



**Delta
Stewardship
Council**

A CALIFORNIA STATE AGENCY

Addressing Climate Impacts in The City of Pittsburg

DELTA ADAPTS AND YOUR COMMUNITY

What is Delta Adapts?

The Delta Stewardship Council launched Delta Adapts in 2018 to improve resilience to climate change impacts in the Sacramento-San Joaquin Delta and Suisun Marsh. The initiative will produce a regional plan that includes information and strategies that can be used to help communities plan for climate impacts with a focus on human safety and wellbeing, flood protection and water supply infrastructure, agriculture, and habitats. We plan to have a draft available for public comment in early 2024.



Key Climate Vulnerabilities in Pittsburg

Pittsburg is most vulnerable to



Increased flood risk: By 2085, at least 2,000 additional people will be at risk of flooding compared to 0 people today.



Extreme heat: The number of extreme heat days above 101° will increase this century.

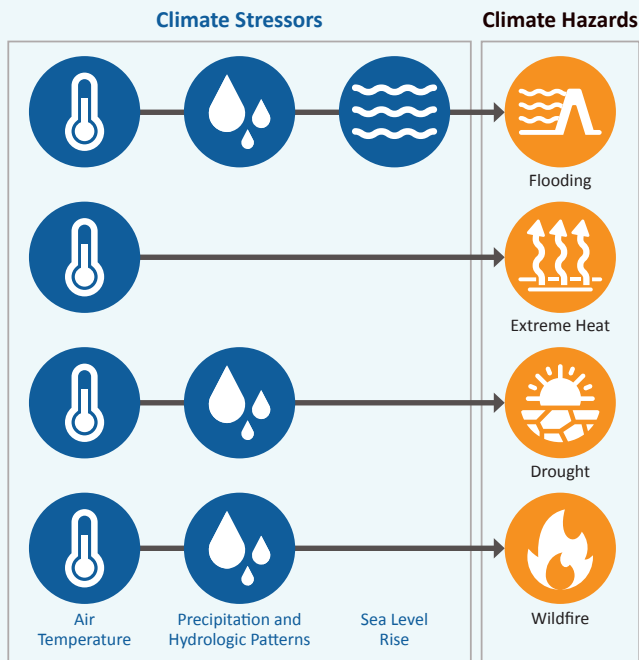
Adaptation Priorities for Pittsburg

We want to ensure the regional Adaptation Plan captures your community's adaptation priorities, including but not limited to the following priorities identified through prior engagement with the Pittsburg community:

- » Coordinate with other agencies on adaptation efforts.
- » Prioritize adaptation for vulnerable communities.
- » Protect shoreline infrastructure from sea level rise and climate hazards.
- » Maximize public shoreline access and increase park resilience.
- » Address drinking water issues, trash in waterways, and food insecurity.
- » Train youth on climate impacts and adaptation.



What is the Vulnerability Assessment?



The Vulnerability Assessment examines these hazards:

- » Flooding and sea level rise
- » Extreme heat
- » Drought
- » Wildfire smoke

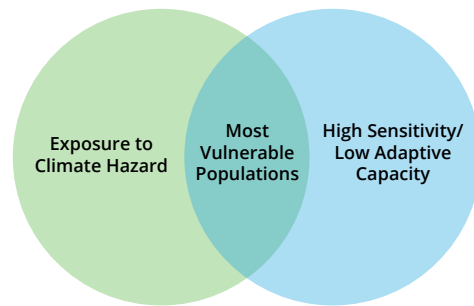
Key takeaways:

- » Flooding will continue to get worse.
- » Climate change will not impact Delta residents equally.
- » Delta water exports will be less reliable in the future.
- » The existing water supply system does not provide enough storage to capture anticipated increases in runoff due to more variable precipitation.
- » In-Delta water uses may be threatened by water quality declines.
- » Delta ecosystems will continue to be stressed under climate change and have little room to migrate.
- » Agricultural production trends will shift with climate change.

Delta Adapts comprises:

PART 1: A climate change **Vulnerability Assessment** evaluates the vulnerability of the Delta and Suisun Marsh to climate impacts through the end of the century, including identifying the communities most vulnerable to climate impacts because they are more sensitive to climate impacts and have fewer resources to respond and recover.

PART 2: An **Adaptation Plan** identifies a range of actions government agencies and communities can take to improve regional adaptation to enhance resiliency for socially vulnerable communities.



Identifying Climate Vulnerability

Environmental justice and equity at the forefront of our work

Ensuring that strategies integrate equity and environmental justice (EJ) and prioritize socially vulnerable communities is essential. The regional Adaptation Plan has been informed by several activities:

- » Consultation with the Council's EJ Expert Group.
- » 22 EJ-focused (compensated) interviews with CBOs across the Bay-Delta.
- » Meetings with community organizations in vulnerable communities focused on climate concerns.
- » Over 2,200 responses to the Delta Residents Survey.



Equity is just and fair inclusion into a society in which all can participate, prosper, and reach their full potential.



Delta Stewardship Council

A CALIFORNIA STATE AGENCY

Abordar los efectos del clima en **La ciudad de Pittsburg** DELTA ADAPTS Y SU COMUNIDAD

¿Qué es Delta Adapts?

El Delta Stewardship Council lanzó Delta Adapts en 2018 para mejorar la resiliencia a los impactos del cambio climático en el Delta de Sacramento-San Joaquín y Suisun Marsh. La iniciativa producirá un plan regional que incluye información y estrategias que pueden utilizarse para ayudar a las comunidades a planificar los impactos climáticos con un enfoque en la seguridad y el bienestar humanos, la protección contra inundaciones y la infraestructura de suministro de agua, la agricultura y los hábitats. Prevemos tener un borrador disponible para comentarios públicos a principios de 2024.

Vulnerabilidades climáticas clave en Pittsburg

Pittsburg es más vulnerable a



Mayor riesgo de inundaciones: En 2085, al menos 2.000 personas más correrán el riesgo de sufrir inundaciones, en comparación con 0 personas actuales.



Calor extremo: El número de días de calor extremo con temperaturas mayores de 101° aumentará este siglo.



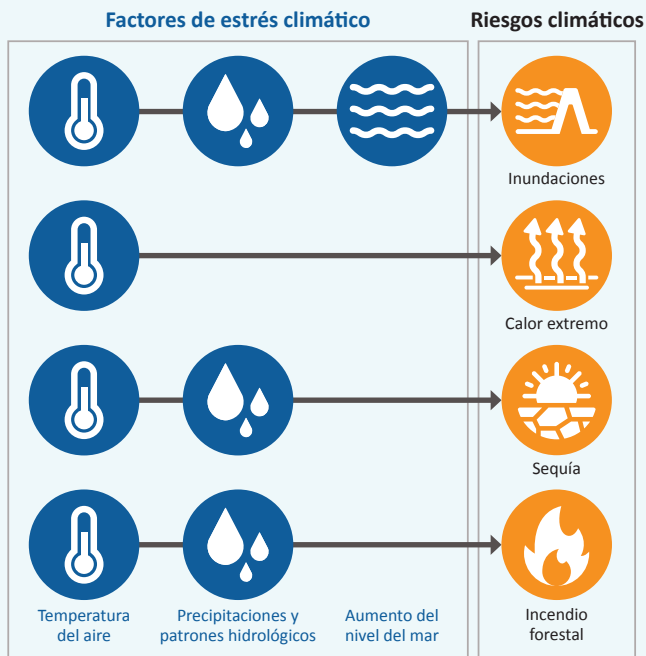
Prioridades de adaptación para Pittsburg

Queremos asegurarnos de que el Plan de Adaptación regional recoge las prioridades de adaptación de su comunidad, incluidas, entre otras, las siguientes prioridades identificadas a través del compromiso anterior con la comunidad de Pittsburg:

- » Coordinar los esfuerzos de adaptación con otras agencias.
- » Dar prioridad a la adaptación de las comunidades vulnerables.
- » Proteger las infraestructuras costeras de la elevación del nivel del mar y de los riesgos climáticos.
- » Maximizar el acceso público a la costa y aumentar la capacidad de recuperación de los parques.
- » Abordar los asuntos relacionados con el agua potable, la basura en las vías fluviales y la inseguridad alimentaria.
- » Capacitar a los jóvenes sobre los efectos del clima y la adaptación al mismo.



Qué es la evaluación de la vulnerabilidad?



La evaluación de la vulnerabilidad examina estos peligros

- » Inundaciones y elevación del nivel del mar
- » Calor extremo
- » Sequía
- » Humo de incendios forestales

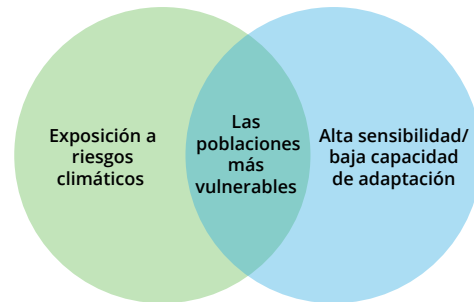
Puntos clave

- » Las inundaciones seguirán empeorando
- » El cambio climático no afectará por igual a los residentes del Delta
- » Las exportaciones de agua del Delta serán menos fiables en el futuro
- » El sistema de suministro de agua existente no proporciona suficiente almacenamiento para captar los aumentos anticipados de la escorrentía debidos a precipitaciones más variables
- » Los usos del agua en el Delta pueden verse amenazados por el deterioro de su calidad
- » Los ecosistemas del delta seguirán sometidos a estrés por el cambio climático y tendrán poco margen para migrar
- » El cambio climático modificará las tendencias de la producción agrícola

Delta Adapts incluye:

PARTE 1: Un cambio climático y **Evaluación de las vulnerabilidades** evalúa la vulnerabilidad del Delta y el pantano de Suisun a los impactos climáticos hasta finales de siglo, incluida la identificación de las comunidades más vulnerables a los impactos climáticos porque son más sensibles a los impactos climá.

PARTE 2: Un **Plan de Adaptación** identifica una serie de acciones que los organismos gubernamentales y las comunidades pueden llevar a cabo para mejorar la adaptación regional con el fin de aumentar la resiliencia de las comunidades socialmente vulnerables.



Identificar la vulnerabilidad climática

La justicia y la equidad medioambientales en la primera línea de nuestro trabajo

Es esencial garantizar que las estrategias integren la equidad y la justicia medioambiental y den prioridad a las comunidades socialmente vulnerables. El Plan de Adaptación regional se ha basado en varias actividades:

- » Consultas con el Grupo de Expertos en Justicia Ambiental del Consejo.
- » 22 entrevistas (remuneradas) centradas en la justicia ambiental con organizaciones comunitarias de todo el Delta de la Bahía.
- » Reuniones con organizaciones comunitarias de comunidades vulnerables centradas en las preocupaciones climáticas.
- » Más de 2.200 respuestas a la encuesta de residentes en el Delta.



La equidad es la inclusión justa y equitativa en una sociedad en la que todos puedan participar, prosperar y alcanzar su pleno potencial.