

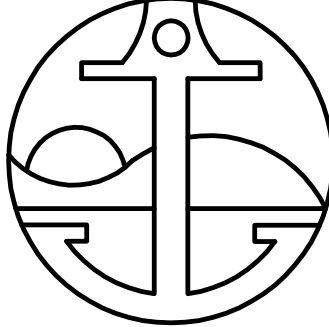
VICINITY MAP
NOT TO SCALE

JOHN SAMUELSON, P.E., CITY ENGINEER, CE 67734
DATE: 3/6/2024

ACCEPTANCE OF THESE IMPROVEMENT PLANS BY THE CITY ENGINEER SHALL NOT RELIEVE THE ENGINEER OF RECORD FOR THE DESIGN NOR FROM ANY DEFICIENCIES RESULTING FROM THE DESIGN THEREOF.

CITY ENGINEER SHALL SIGN ANY REVISION PRIOR OR DURING CONSTRUCTION. A COPY OF THE REVISION SHALL BE SUBMITTED TO THE CITY THROUGH ELECTRONIC OR HARD COPY FORMAT.

A "RECORD DRAWING" SHALL BE SUBMITTED TO THE CITY THROUGH ELECTRONIC OR HARD COPY PRIOR TO ACCEPTANCE OF THE WORK AS COMPLETE.


CITY OF PITTSBURG
 ENGINEERING DEPARTMENT
AMERICANA PARK BYPASS CHANNEL
 PROJECT NO. 8336

**THE CITY COUNCIL
OF THE CITY OF PITTSBURG**
 JUAN ANTONIO BANALES, MAYOR
 JELANI KILLINGS, VICE-MAYOR
 DIONNE ADAMS, COUNCIL MEMBER
 ANGELICA LOPEZ, COUNCIL MEMBER
 SHANELLE SCALES-PRESTON, COUNCIL MEMBER

GARRETT EVANS, CITY MANAGER
 ALICE EVENSON, CITY CLERK
 JOHN SAMUELSON, DIRECTOR PUBLIC WORKS, CITY ENGINEER

TO BE SUPPLEMENTED BY THE CITY OF PITTSBURG STANDARD DETAILS DATED 2022,
 THE CONTRA COSTA COUNTY PUBLIC WORKS DEPARTMENT STANDARD PLANS DATED MARCH 2014,
 AND THE STATE OF CALIFORNIA STANDARD PLANS, 2022 EDITION, AND ALL APPLICABLE REVISIONS.

INDEX OF SHEETS

SHT NO.	DESCRIPTION
1	TITLE SHEET (T-1)
2	TYPICAL SECTIONS (X-1)
3	PLAN AND PROFILE (P-1)
4	GRADING AND EROSION CONTROL PLAN (G-1)
5	DRIVEWAY CULVERT CROSSING (C-1)
6	RSP (C-2)
7	BYPASS INLET (C-3)
8	WATERLINES (C-4)
9	CONSTRUCTION DETAILS AND IRRIGATION PLAN (C-5)
10	HMA WALKWAY (C-6)
11	LIGHTING PLAN (E-1)

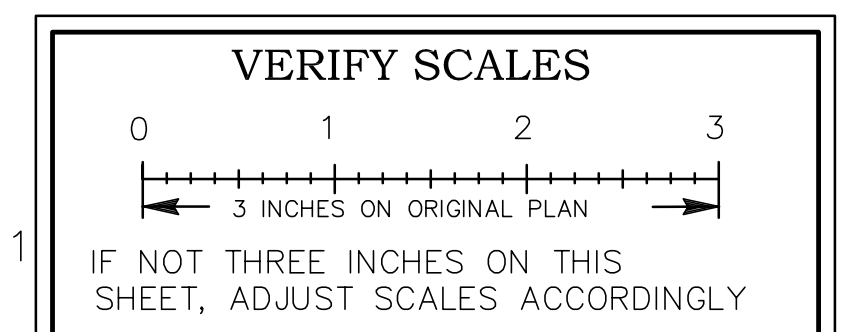
LEGEND AND ABBREVIATIONS

(FOR STANDARD LEGEND AND ABBREVIATIONS, SEE STATE STD PLAN SHTS A3A TO A3C AND A10A TO A10E)

— E —	EXIST ELECTRIC LINE
— C —	EXIST CABLE LINE
— T —	EXIST TELEPHONE LINE
— SD —	EXIST STORM DRAIN
— W —	EXIST WATER LINE
— SS —	EXIST SEWER LINE
— G —	EXIST GAS LINE
— P —	EXIST PETROLEUM LINE
— X—X—X—	EXIST FENCE
---	RIGHT-OF-WAY
- - - -	SAWCUT
□	ESA FENCE - ENVIRONMENTALLY SENSITIVE AREA FENCE
C&G	CURB AND GUTTER
DTL	DETAIL
ESA	ENVIRONMENTALLY SENSITIVE AREA
FG	FINISH GROUND
FOC	FACE OF CURB
HMA	HOT MIX ASPHALT
OG	ORIGINAL GROUND
RSP	ROCK SLOPE PROTECTION
R/W	RIGHT-OF-WAY
SDMH	STORM DRAIN MANHOLE
TB	TOP OF BERM
TOB	TOP OF BANK
[Pattern]	RSP (CL IV)
[Pattern]	EROSION CONTROL (TYPE D)
[Pattern]	PROTECTED WETLANDS
[Pattern]	AREA RESTRICTED TO CONTRACTOR

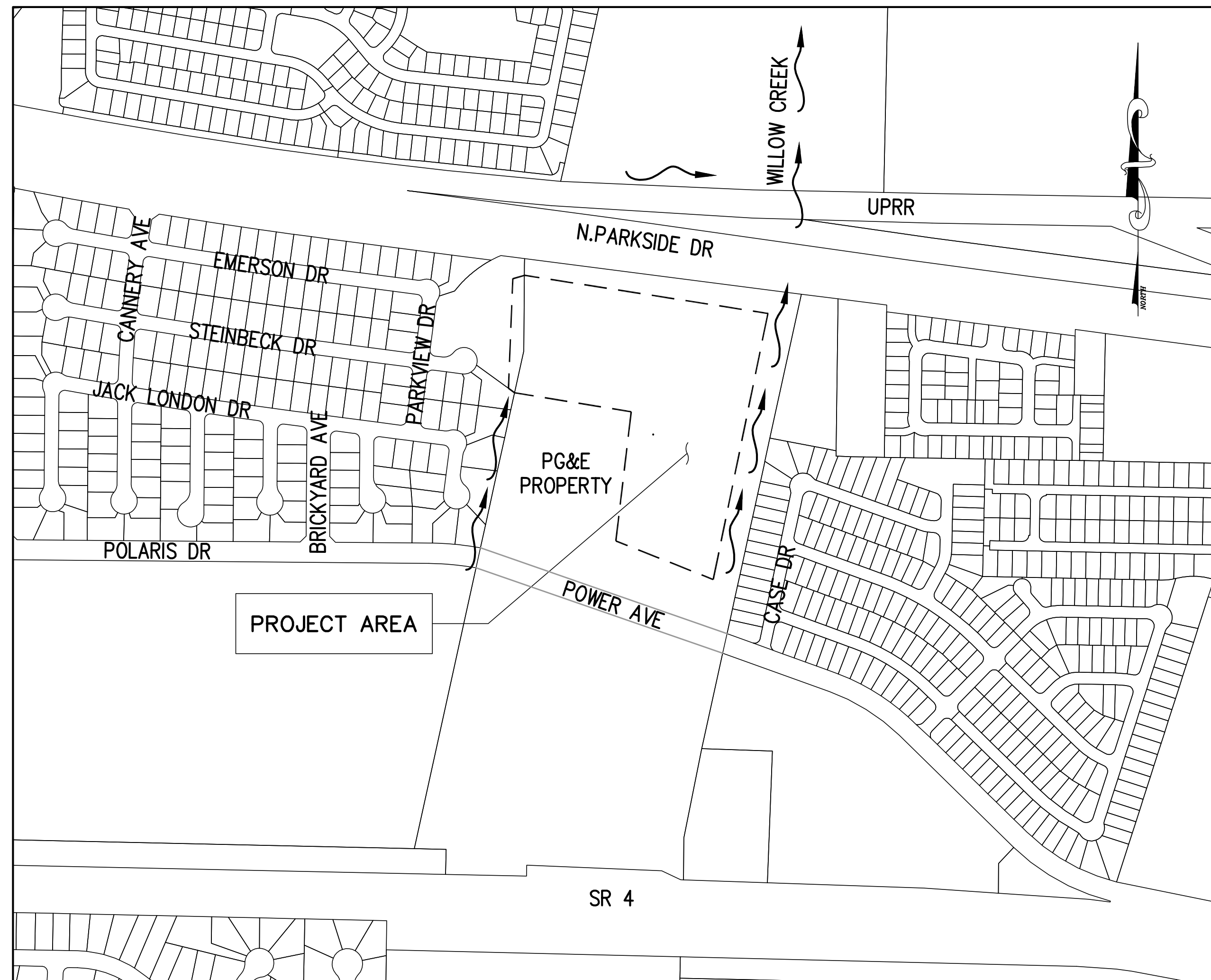


1-800-227-2600 OR 811



NOTES:

- THE CONTRACTOR SHALL INSPECT THE PROJECT SITE PRIOR TO SUBMITTING A BID IN ORDER TO OBSERVE AND DETERMINE THE EXISTING JOB SITE CONDITIONS. LANDSCAPING FEATURES ARE NOT SHOWN ON THE PLANS.
- THE CONTRACTOR AGREES THAT IN ACCORDANCE WITH GENERALLY ACCEPTED CONSTRUCTION PRACTICES, CONTRACTOR SHALL ASSUME COMPLETE RESPONSIBILITY FOR JOB SITE CONDITIONS DURING THE COURSE OF CONSTRUCTION OF THE PROJECT. THESE PLANS DO NOT INCLUDE COMPONENTS NECESSARY FOR CONSTRUCTION SAFETY. IT IS THE CONTRACTOR'S RESPONSIBILITY TO PROVIDE FOR THE SAFETY OF ALL PERSONS AND PROPERTY DURING THE COURSE OF THE PROJECT AND TO COMPLY WITH CONSTRUCTION SAFETY ORDERS AND CAL/OSHA REQUIREMENTS.
- THE LOCATION OF EXISTING UTILITIES SHOWN ON THE PLANS ARE PLOTTED FROM SCHEMATIC DRAWINGS PROVIDED BY THE UTILITY COMPANIES AND ARE APPROXIMATE LOCATIONS IT IS THE CONTRACTOR'S RESPONSIBILITY TO VERIFY THE LOCATION AND ELEVATIONS OF ALL EXISTING UTILITIES INCLUDING ALL OVERHEAD AND BURIED UTILITIES WITHIN THE WORK AREA PRIOR TO BEGINNING CONSTRUCTION. CONTRACTOR SHALL PROCEED WITH CAUTION DURING EXCAVATION OPERATIONS AND SHALL BE RESPONSIBLE FOR THE REPAIR OR REPLACEMENT OF ALL UTILITIES DAMAGED DURING CONSTRUCTION AT THE CONTRACTOR'S EXPENSE. CONTRACTOR SHALL NOTIFY UNDERGROUND SERVICE ALERT (U.S.A.) AT (800) 227-2600 A MINIMUM OF 48 HOURS IN ADVANCE OF ANY EXCAVATION.
- TRAFFIC CONTROL DURING CONSTRUCTION SHALL BE THE CONTRACTOR'S RESPONSIBILITY. ALL TRAFFIC CONTROL AND DEVICES SHALL BE IN ACCORDANCE WITH THE LATEST EDITION OF THE CALIFORNIA MANUAL OF UNIFORM TRAFFIC CONTROL DEVICES.
- THE CONTRACTOR SHALL PROVIDE FOR CONTINUOUS INGRESS AND EGRESS TO PG&E THROUGHOUT THE PERIOD OF CONSTRUCTION UNLESS APPROVED IN ADVANCE BY THE ENGINEER.
- THE CONTRACTOR SHALL BE RESPONSIBLE FOR ANY DAMAGES TO THE SITE OR THE SURROUNDING AREA AS A RESULT OF THE CONTRACTOR'S WORK OR OPERATIONS. EXISTING FACILITIES THAT ARE DAMAGED OR DISPLACED BY THE CONTRACTOR SHALL BE REPLACED AT THE CONTRACTOR'S EXPENSE.
- ALL EXISTING FACILITIES, STRUCTURES, TREES, FENCES, LANDSCAPING, ETC., ARE TO REMAIN. ONLY THOSE SPECIFICALLY DESIGNATED FOR REMOVAL AS SHOWN ON THE PLANS, OR AS DIRECTED BY THE ENGINEER, SHALL BE REMOVED.
- IF, DURING THE COURSE OF THE WORK, THE CONTRACTOR ENCOUNTERS ANY SURFACE OR SUBSURFACE MATERIALS THAT THEY BELIEVE ARE HAZARDOUS (AS DEFINED IN SECT. 25117 OF THE HEALTH AND SAFETY CODE), THE CONTRACTOR MUST INFORM THE ENGINEER IN WRITING IMMEDIATELY. MATERIAL IS TO REMAIN UNDISTURBED UNTIL AN INVESTIGATION BY THE CITY. REMOVAL AND/OR DISPOSAL OF HAZARDOUS MATERIALS IS NOT PART OF THE SCOPE OF WORK.
- THE PRIME CONTRACTOR AND ALL SUBCONTRACTORS SHALL BE APPROPRIATELY LICENSED BY THE CALIFORNIA CONTRACTORS STATE LICENSE BOARD.



PROJECT LOCATION MAP
NOT TO SCALE

SURVEY CONTROL POINTS					
SURVEY POINT NUMBER	CP NUMBER	NORTHING	EASTING	ELEVATION	DESCRIPTION
13	CP-4	2198914.9537'	6156752.4238'	19.979'	SET SPIKE
10	CP-1	2198826.3478'	6156062.9533'	24.110'	SET SPIKE
1554	CP-4	2198948.9705'	6155972.4334'	25.031'	MAGNETIC NAIL
12	-	2198847.9678'	6155952.8328'	24.898'	SET NAIL
106	CP-106	2199052.7028'	6155955.8835'	24.329'	GPS/ROV

NO.	DATE	APPROV.	REVISION

DESIGNED: RTH
 DRAWN: ESM
 CHECKED: RTH
 REVIEWED: RTH
 DATE: 06-18-2023

APPROVED BY:



City Engineer
Date:

HEI HARRISON ENGINEERING INC.
 1987 BONIFACIO STREET • CONCORD, CA 94520
 PHONE (925) 691-0450



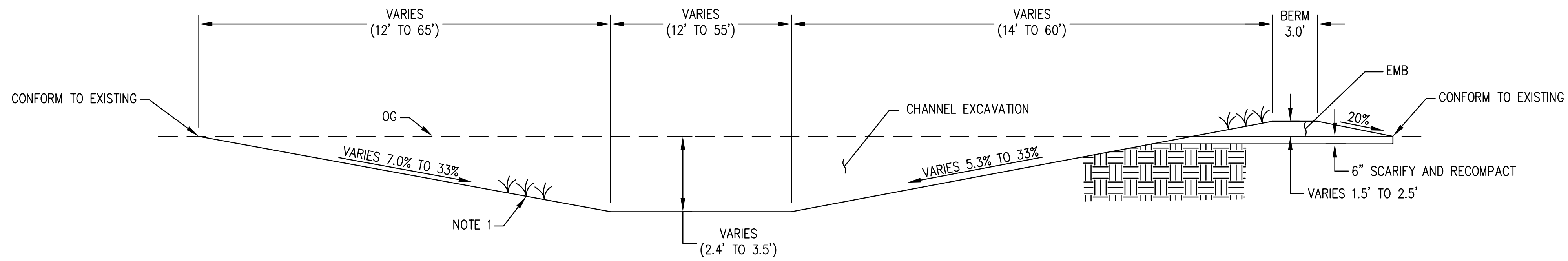
CITY OF PITTSBURG

AMERICANA PARK BYPASS CHANNEL

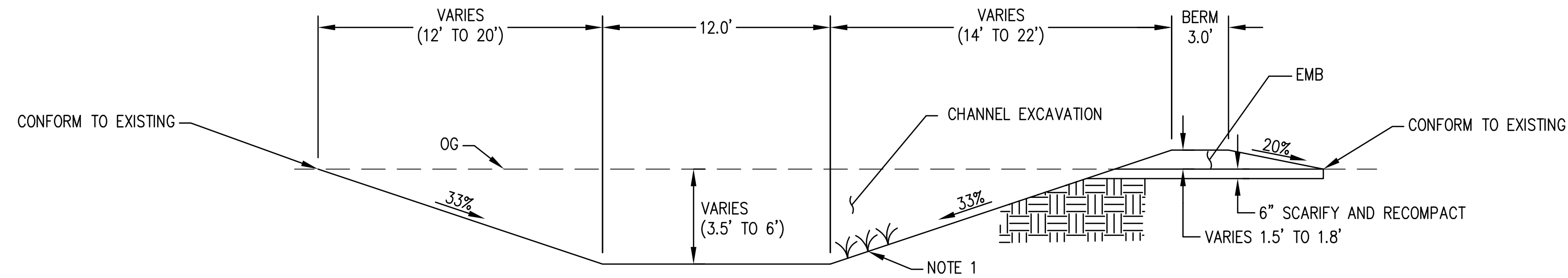
TITLE SHEET

SHEET
T-1

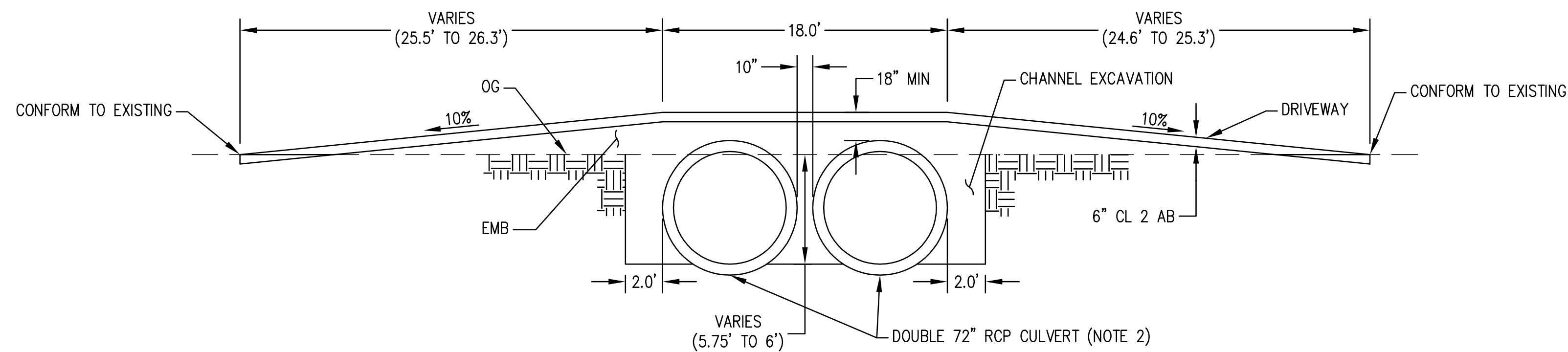
SCALE: AS SHOWN
SHEET: 1 OF 11



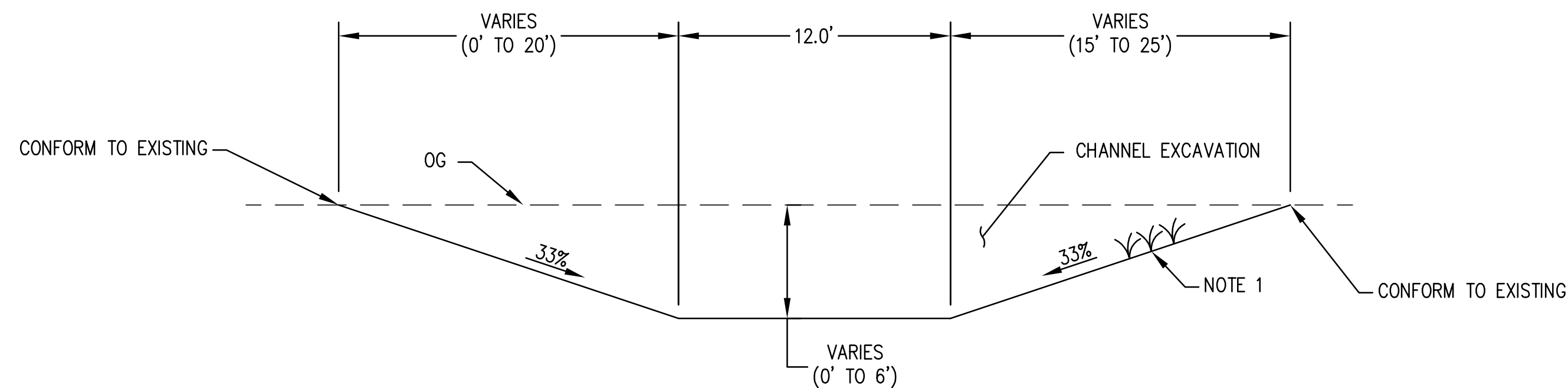
CHANNEL SECTION (STA "A" 17+25 TO 18+81)
NOT TO SCALE



CHANNEL SECTION (STA "A" 11+07.2 TO 17+25)
RSP FROM STA 10+95.2 TO 11+17.1 (SEE SHEET C-2)
NOT TO SCALE



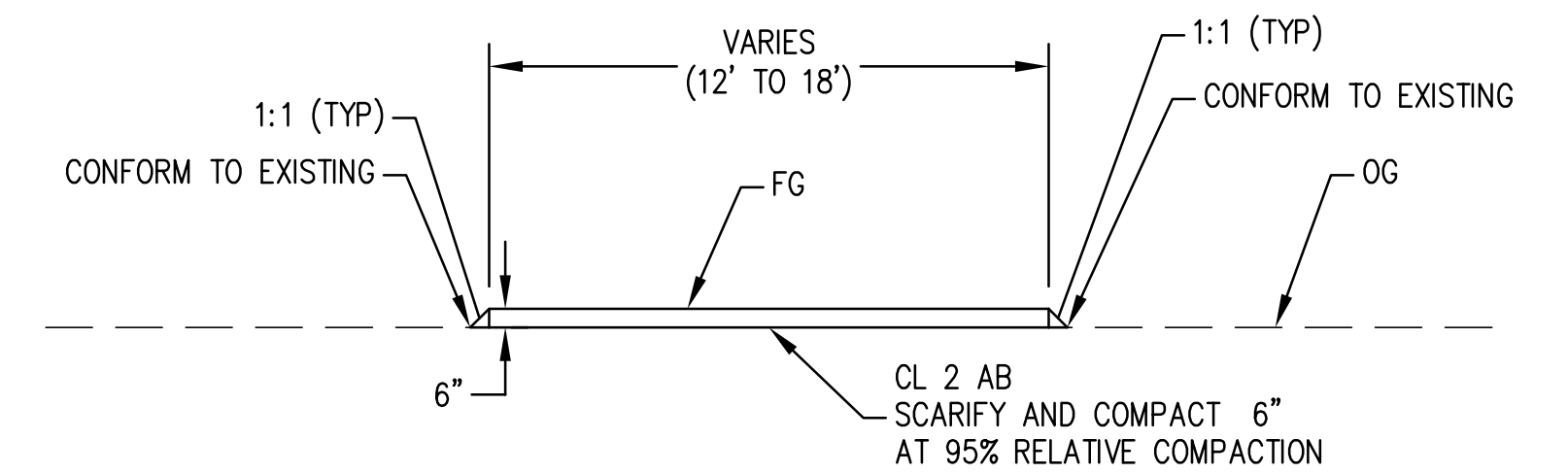
CHANNEL SECTION (STA "A" 10+77.3 TO 10+95.2)
NOT TO SCALE



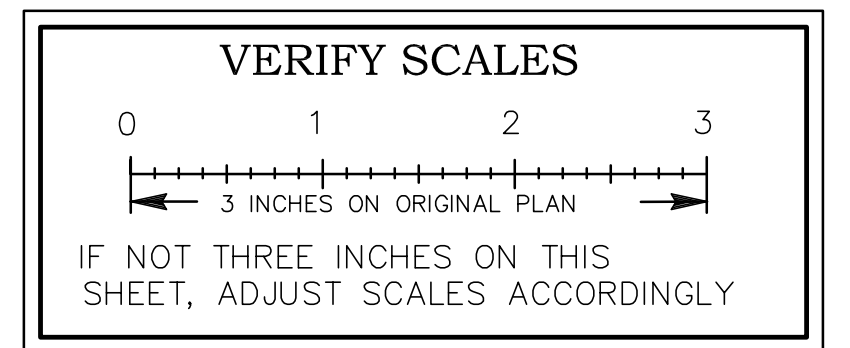
CHANNEL SECTION (STA "A" 9+94.6 TO 10+67.9)
RSP FROM STA 10+52.0 TO 10+77.3 (SEE SHEET C-2)
NOT TO SCALE

NOTES:

1. ALL EXPOSED SOIL SHALL RECEIVE EROSION CONTROL (TYPE D) WHEN GRADING WORK IS COMPLETE.
2. 40 LF (5 PIECES) OF 72" RCP ARE AVAILABLE FOR THE CONTRACTOR'S USE. PICK UP AT RANGE ROAD SOUTH OF POLARIS DRIVE.



DRIVEWAY SECTION
(STA "B" 9+86.1 TO 10+11.9 AND 10+76.2 TO 13+19.9)
NOT TO SCALE



NO.	DATE	APPROV.	REVISION

DESIGNED: RTH
DRAWN: ESM
CHECKED: RTH
REVIEWED: RTH
DATE: 06-18-2023

APPROVED BY:



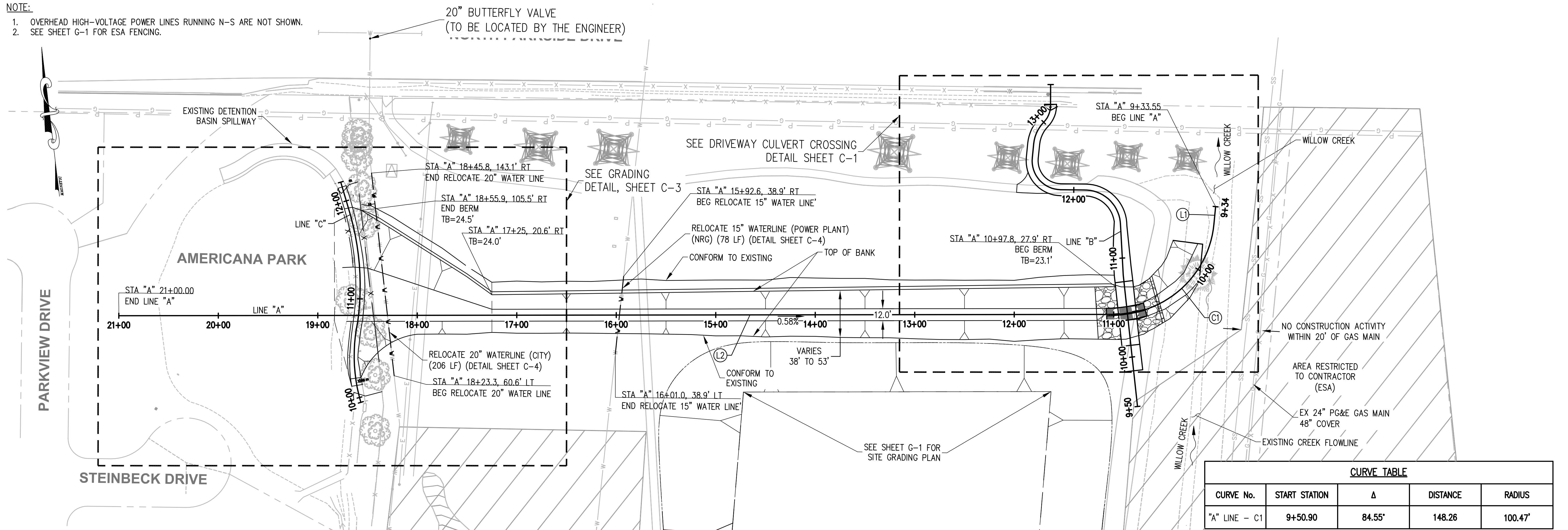
HEI HARRISON ENGINEERING INC.
1987 BONIFACIO STREET • CONCORD, CA 94520
PHONE (925) 691-0450



CITY OF PITTSBURG		
AMERICANA PARK BYPASS CHANNEL		
TYPICAL SECTIONS	SHEET X-1	SCALE: AS SHOWN SHEET: 2 OF 11

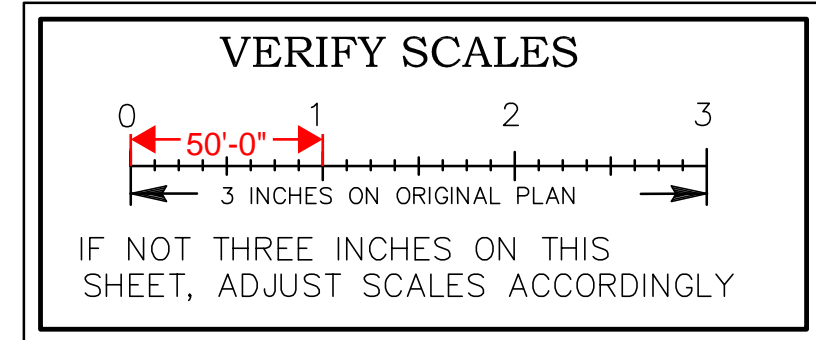
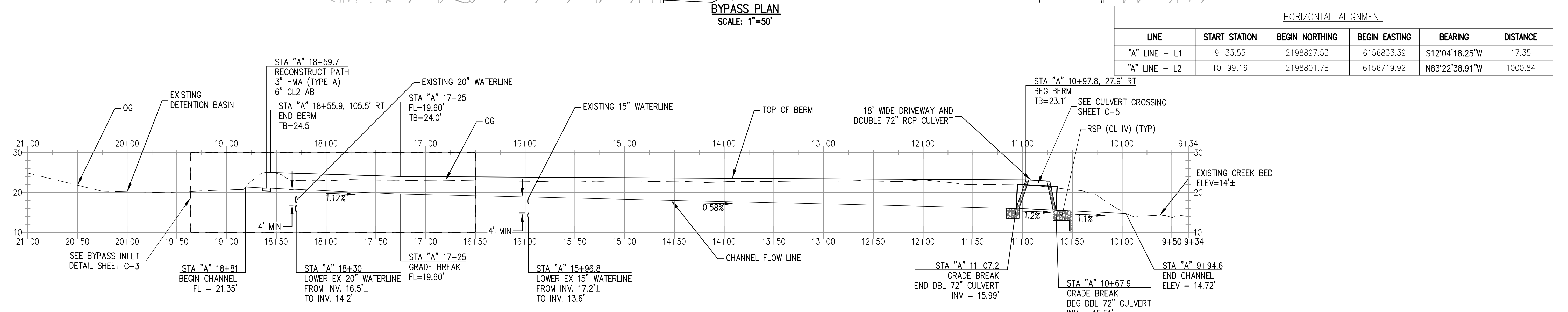
NOTE:

- OVERHEAD HIGH-VOLTAGE POWER LINES RUNNING N-S ARE NOT SHOWN.
- SEE SHEET G-1 FOR ESA FENCING.



CURVE TABLE				
CURVE No.	START STATION	Δ	DISTANCE	RADIUS
"A" LINE - C1	9+50.90	84.55°	148.26	100.47'

HORIZONTAL ALIGNMENT					
LINE	START STATION	BEGIN NORTHING	BEGIN EASTING	BEARING	DISTANCE
"A" LINE - L1	9+33.55	2198897.53	6156833.39	S12°04'18.25"W	17.35
"A" LINE - L2	10+99.16	2198801.78	6156719.92	N83°22'38.91"W	1000.84



NO.	DATE	APPROV.	REVISION

DESIGNED: RTH
 DRAWN: ESM
 CHECKED: RTH
 REVIEWED: RTH
 DATE: 06-18-2023

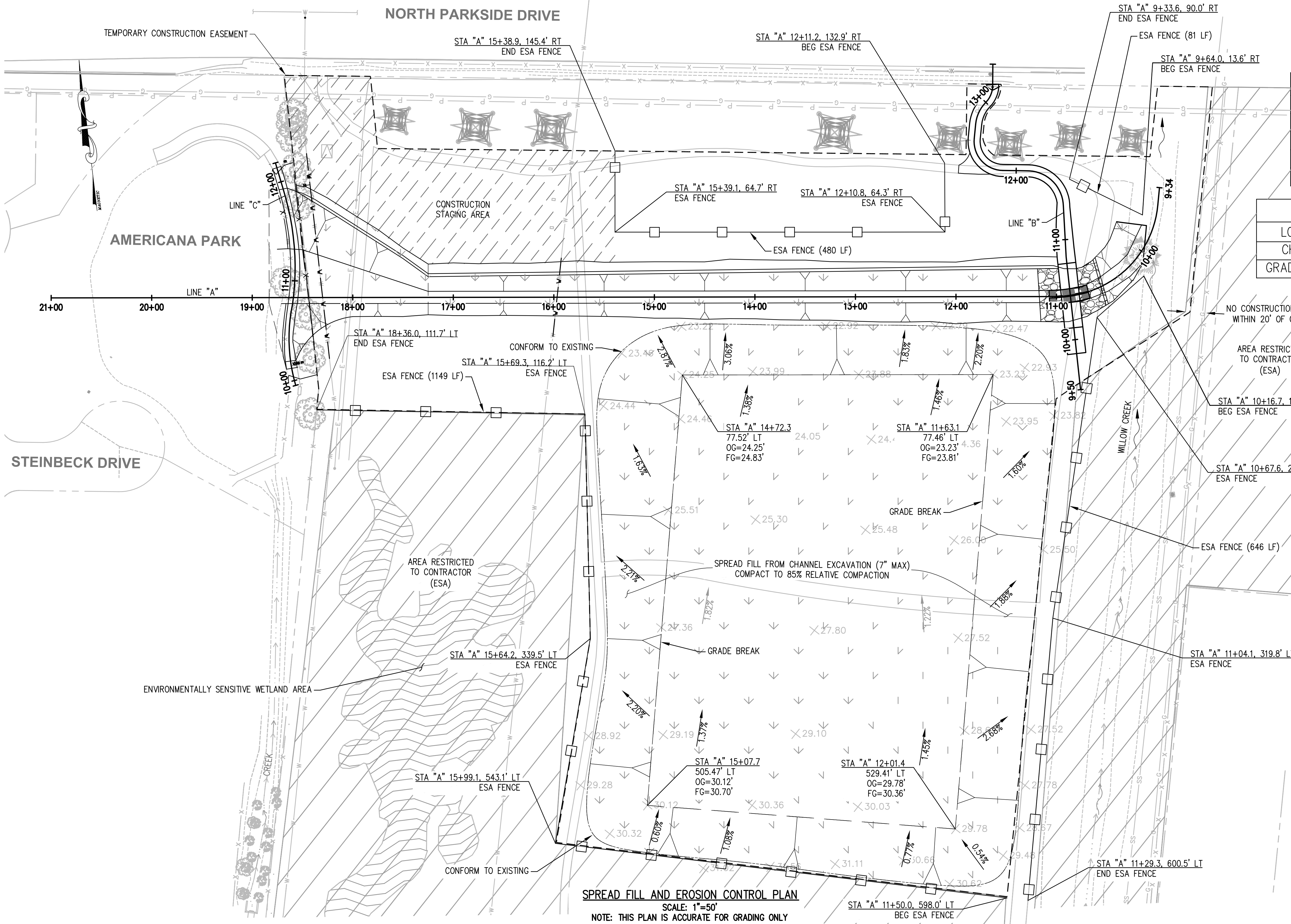
APPROVED BY:
 City Engineer
 Date:



HEI HARRISON ENGINEERING INC.
 1987 BONIFACIO STREET • CONCORD, CA 94520
 PHONE (925) 691-0450



CITY OF PITTSBURG
AMERICANA PARK BYPASS CHANNEL
 PLAN AND PROFILE SHEET P-1 SCALE: AS SHOWN SHEET: 3 OF 11



EROSION CONTROL DATA	
LOCATION	SF
CHANNEL AREA	51509
GRADING AREA	232169
CONSTRUCTION ACCESS	36670
TOTAL	320348

CUT & FILL QUANTITIES			
LOCATION	CUT (CY)	FILL (CY)	TOTAL
CHANNEL	4620	462	4158
GRADING AREA	0	4158	4158

LEGEND

- EROSION CONTROL (TYPE D)
- PROTECTED WETLANDS
- ENVIRONMENTALLY SENSITIVE AREA
- ESA FENCE - ENVIRONMENTALLY SENSITIVE AREA FENCE
- EXISTING GRADE
- EXISTING SLOPE

VERIFY SCALES

0 1 2 3

3 INCHES ON ORIGINAL PLAN

IF NOT THREE INCHES ON THIS SHEET, ADJUST SCALES ACCORDINGLY

SPREAD FILL AND EROSION CONTROL PLAN
 SCALE: 1"=50'
 NOTE: THIS PLAN IS ACCURATE FOR GRADING ONLY

NO.	DATE	APPROV.	REVISION

DESIGNED: RTH
 DRAWN: ESM
 CHECKED: RTH
 REVIEWED: RTH
 DATE: 06-18-2023

APPROVED BY:
 City Engineer
 Date:

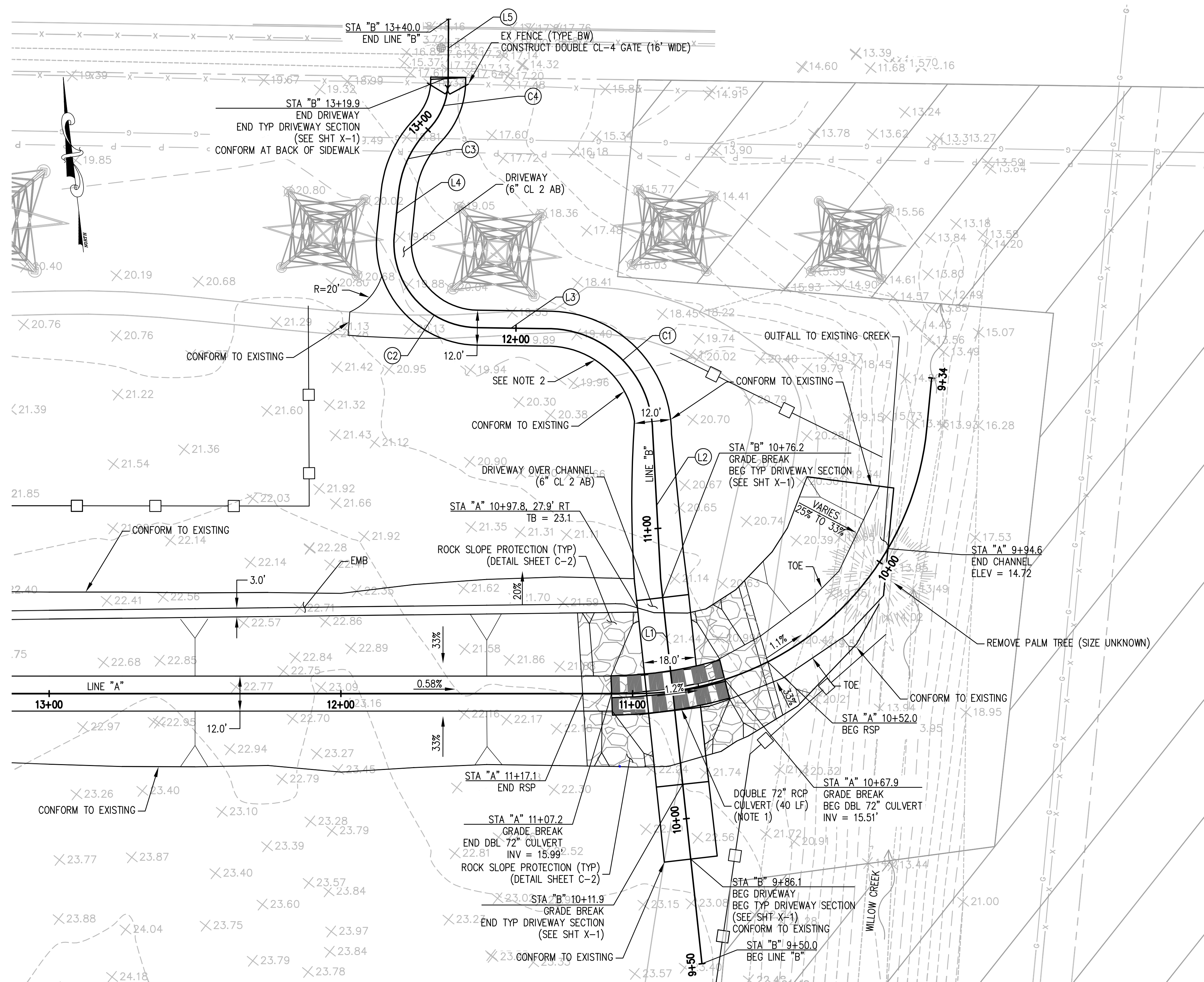


HEI HARRISON ENGINEERING INC.
 1987 BONIFACIO STREET • CONCORD, CA 94520
 PHONE (925) 691-0450



CITY OF PITTSBURG
AMERICANA PARK BYPASS CHANNEL

GRADING AND EROSION CONTROL PLAN	SHEET G-1	SCALE: AS SHOWN	SHEET: 4 OF 11
----------------------------------	-----------	-----------------	----------------

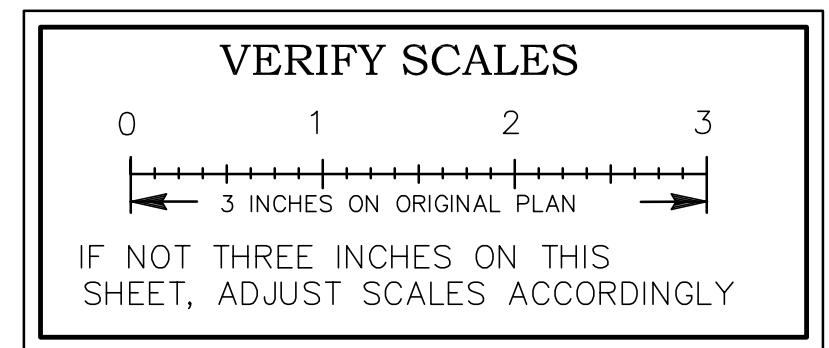


CURVE TABLE				
CURVE No.	START STATION	Δ	DISTANCE	RADIUS
"B" LINE - C1	11+33.15	90.88'	57.04	35.96
"B" LINE - C2	12+13.25	95.03'	48.10	29.00
"B" LINE - C3	12+75.76	38.65'	24.29	36.00
"B" LINE - C4	13+00.05	47.24'	19.83	24.05

HORIZONTAL ALIGNMENT					
LINE	START STATION	BEGIN NORTHING	BEGIN EASTING	BEARING	DISTANCE
"B" LINE - L1	9+50.00	2198707.17	6156732.02	N0°29'41.38"E	132.74
"B" LINE - L2	10+82.74	2198839.90	6156733.17	N3°32'29.69"E	50.41
"B" LINE - L3	11+90.19	2198929.66	6156703.56	N82°35'30.36"W	23.06
"B" LINE - L4	12+61.35	2198967.64	6156656.11	N12°26'27.03"E	14.41
"B" LINE - L5	13+19.88	2199019.07	6156680.65	N7°01'05.49"E	19.90

- CONSTRUCTION NOTES:**
- 72" RCP (8' SEGMENTS) SHALL BE INSTALLED WITH 3" DEFLECTION AT EACH JOINT, AS SHOWN.
 - GRADE DRIVEWAY TO ALLOW DRAINAGE TO SHEET FLOW ACROSS (LENGTH OF CURVE C1).

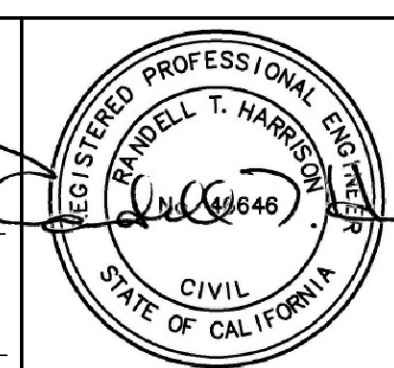
DRIVEWAY CULVERT CROSSING
SCALE 1"=20'



NO.	DATE	APPROV.	REVISION

DESIGNED: RTH
DRAWN: ESM
CHECKED: RTH
REVIEWED: RTH
DATE: 06-18-2023

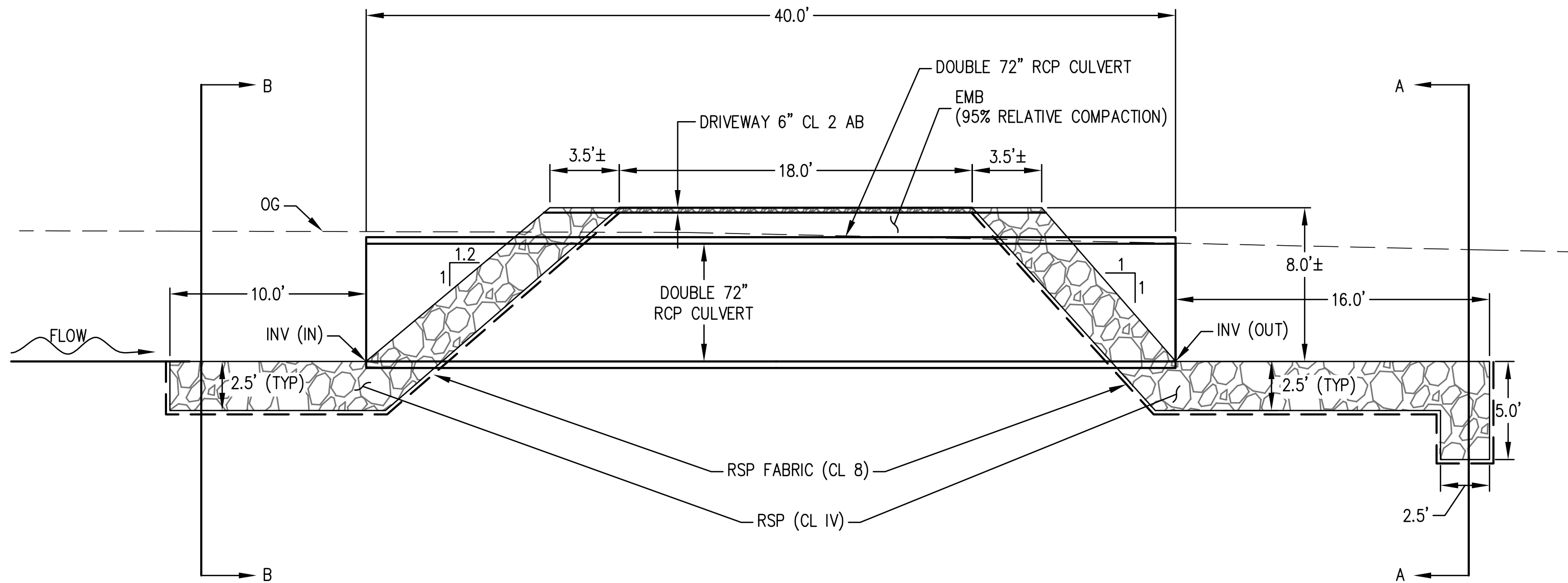
APPROVED BY:
City Engineer
Date:



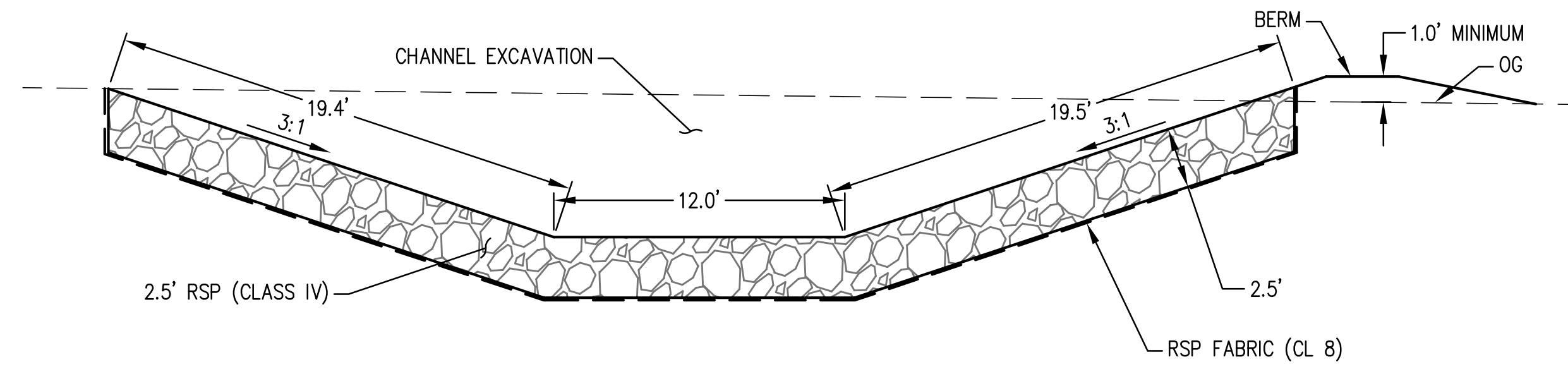
HEI HARRISON ENGINEERING INC.
1987 BONIFACIO STREET • CONCORD, CA 94520
PHONE (925) 691-0450



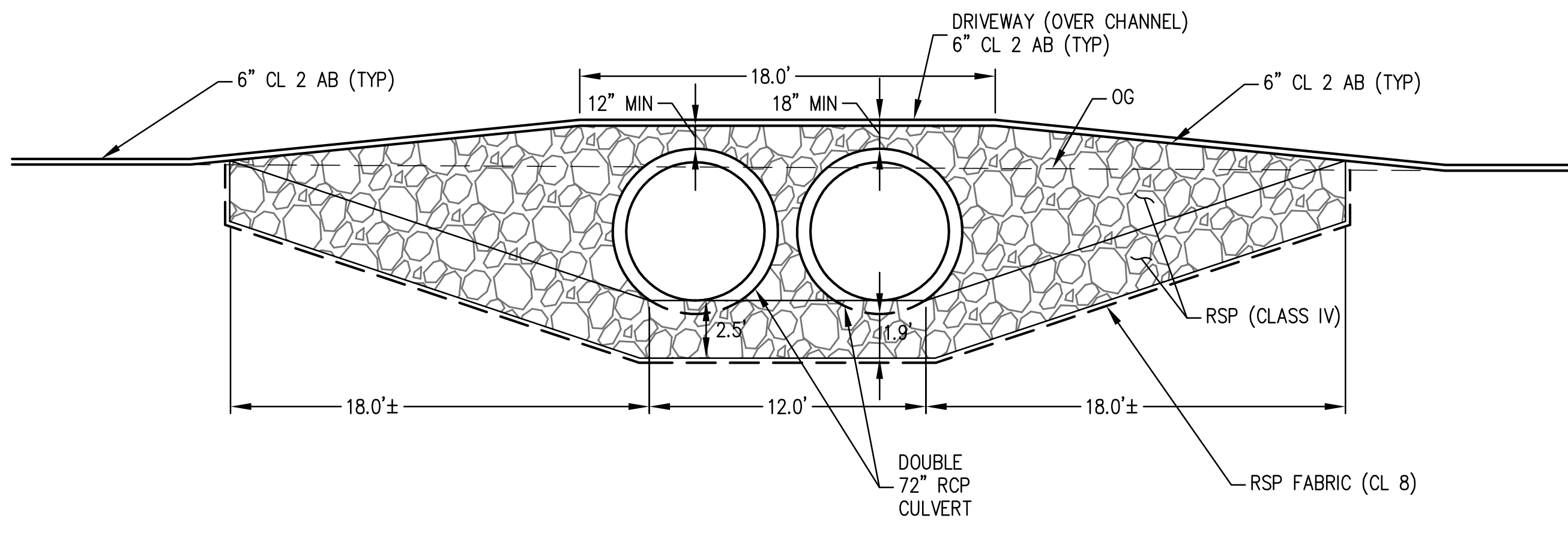
CITY OF PITTSBURG
AMERICANA PARK BYPASS CHANNEL
CONSTRUCTION DETAILS - SHEET C-1
SCALE: AS SHOWN
SHEET: 5 OF 11



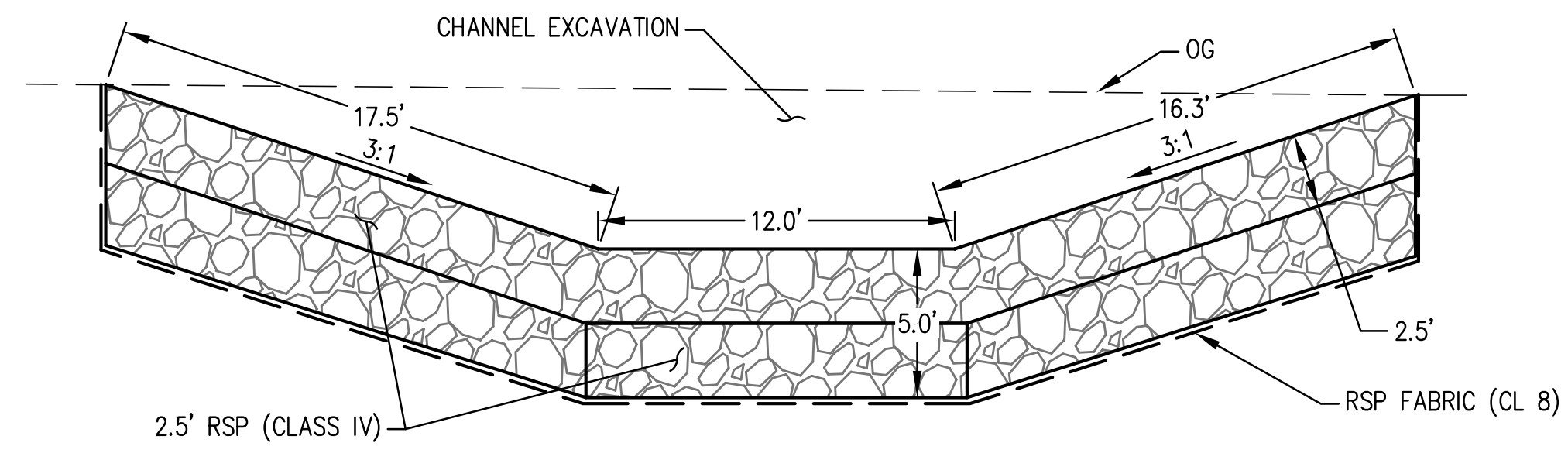
DRIVEWAY CROSS SECTION (STA "C" 10+37.5 TO 10+51.0)
NOT TO SCALE



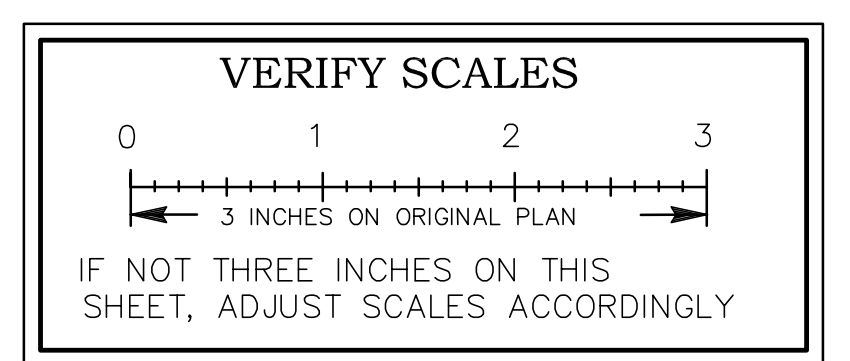
SECTION B-B
NOT TO SCALE



ELEVATION VIEW AT DRIVEWAY (STA "A" 10+67.9 TO 10+77.3 AND STA 10+95.2 TO 11+07.2)
NOT TO SCALE



SECTION A-A
NOT TO SCALE



NO.	DATE	APPROV.	REVISION

DESIGNED: RTH
DRAWN: ESM
CHECKED: RTH
REVIEWED: RTH
DATE: 06-18-2023

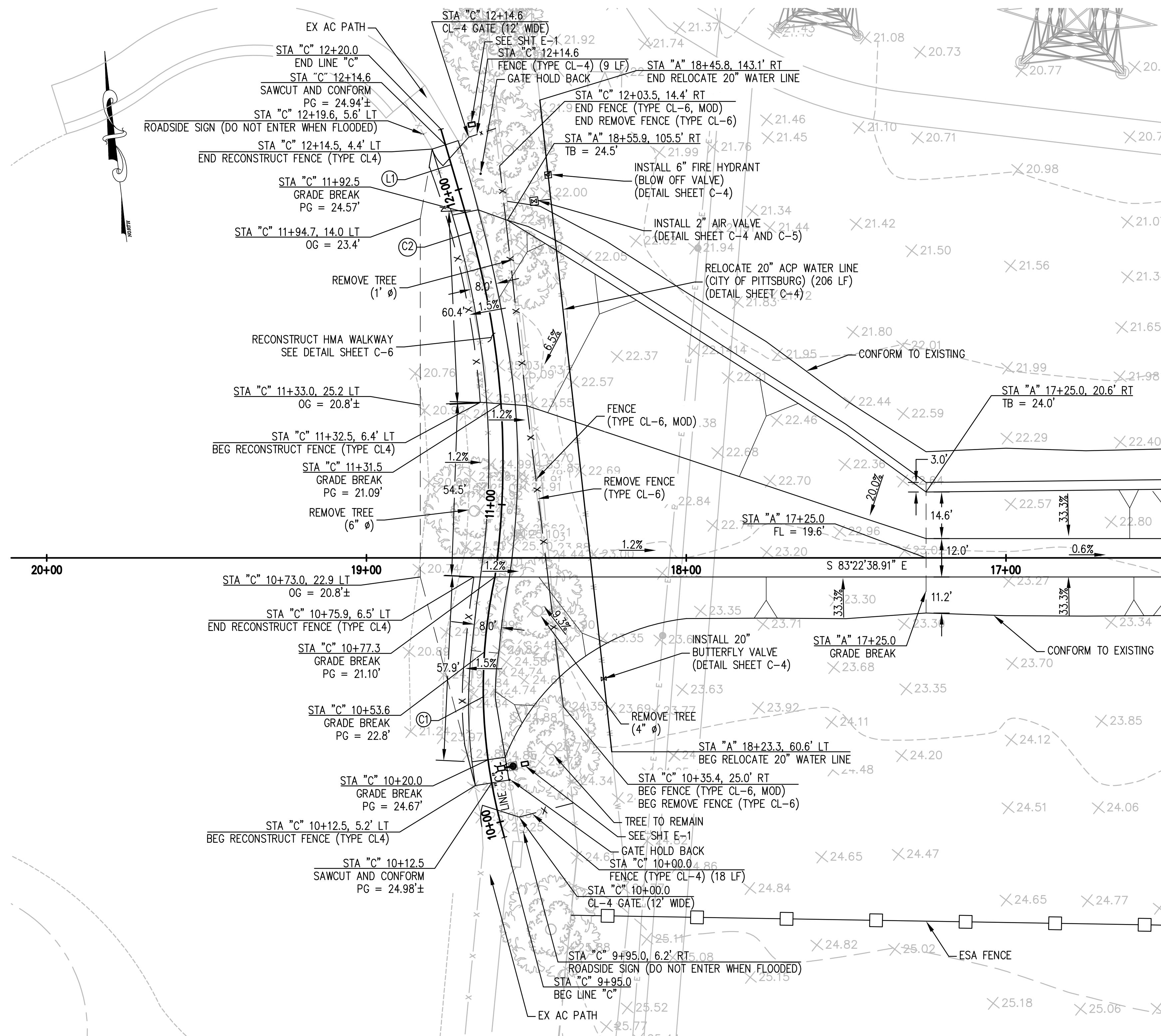
APPROVED BY: _____
City Engineer
Date: _____



HEI HARRISON ENGINEERING INC.
1987 BONIFACIO STREET • CONCORD, CA 94520
PHONE (925) 691-0450



CITY OF PITTSBURG		
AMERICANA PARK BYPASS CHANNEL		
CONSTRUCTION DETAILS RSP	SHEET C-2	SCALE: AS SHOWN SHEET: 6 OF 11

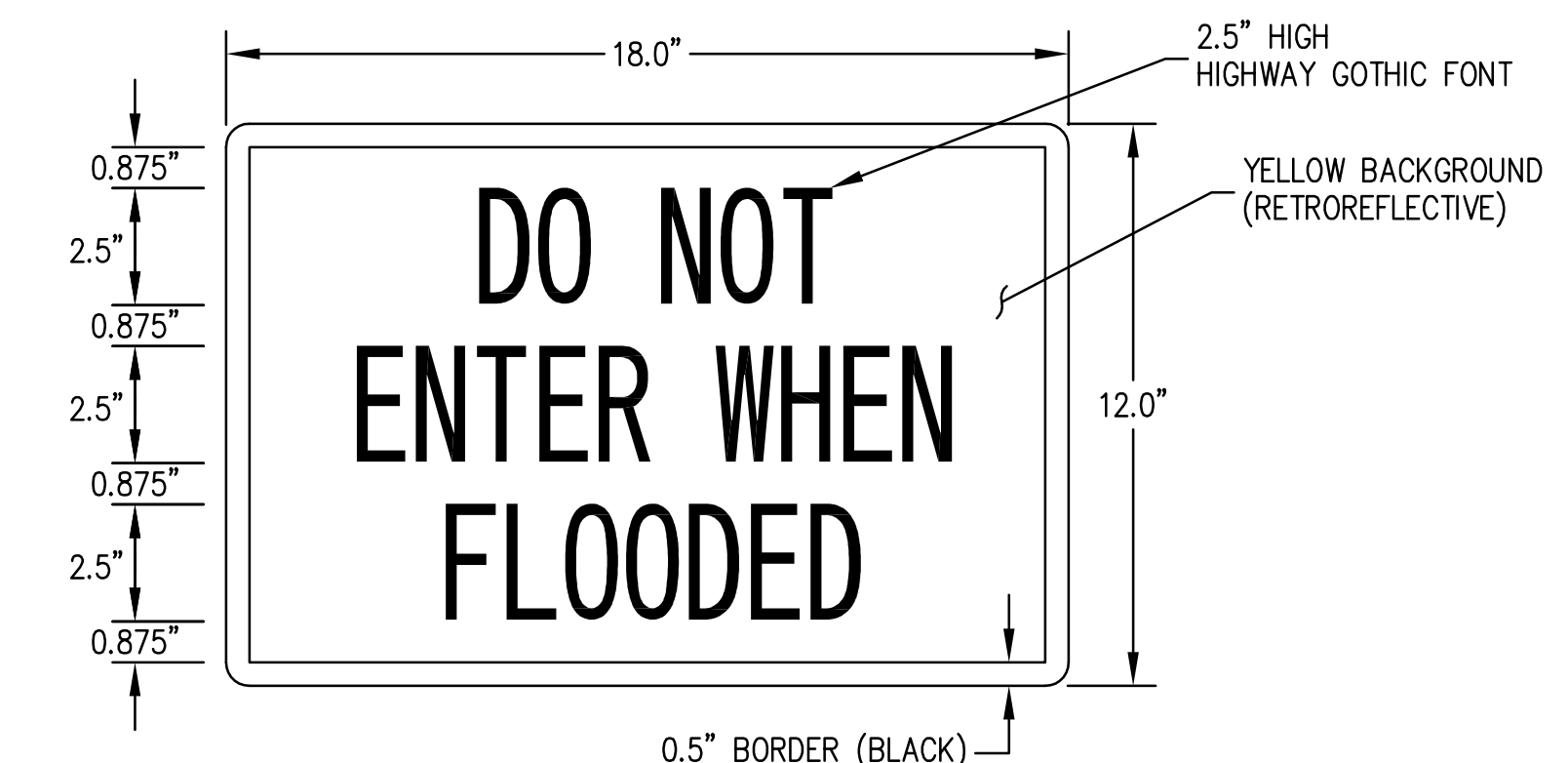


CURVE TABLE				
CURVE No.	START STATION	Δ	DISTANCE	RADIUS
"C" LINE - C1	9+95.00	28.20°	82.26	167.12
"C" LINE - C2	11+77.26	25.19°	115.28	262.20

HORIZONTAL ALIGNMENT					
LINE	START STATION	BEGIN NORTHING	BEGIN EASTING	BEARING	DISTANCE
"C" LINE - L1	11+92.54	2198997.86	6155967.56	N9°39'55.95"W	27.08

ROADSIDE SIGN NOTES:

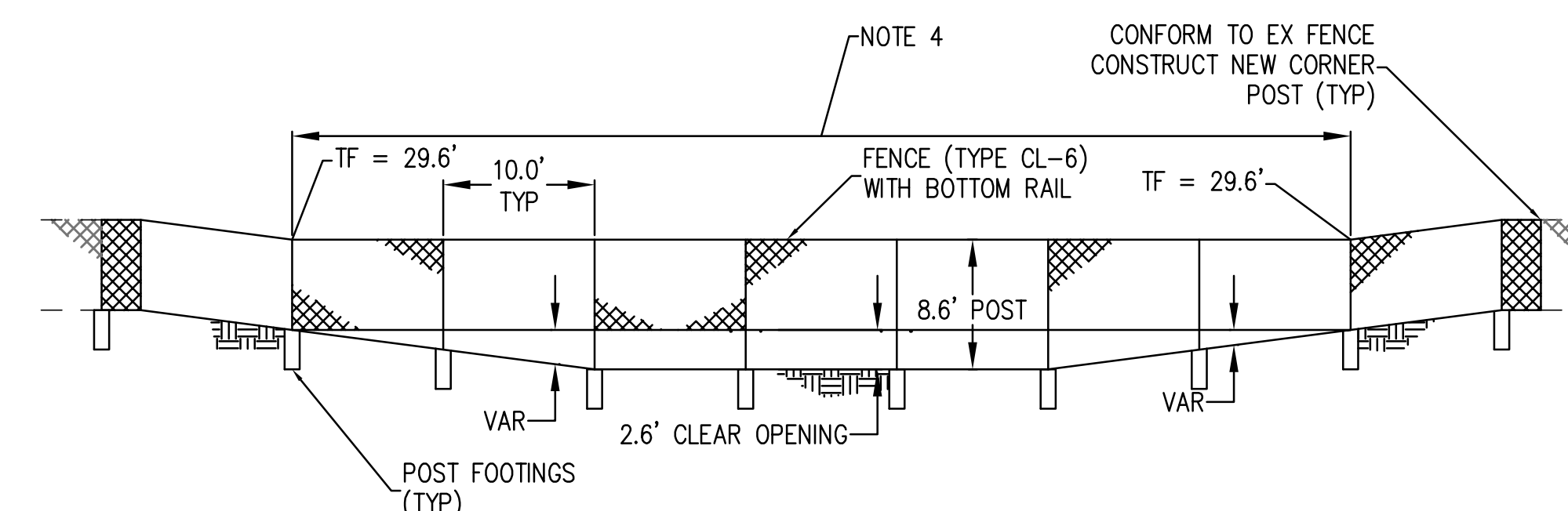
1. MOUNT SIGN PANEL ON GATE PANEL (2 EA) AND ON WOOD POST, 5' HIGH (2 EA).



ROADSIDE SIGN (DO NOT ENTER WHEN FLOODED) DETAIL
NOT TO SCALE

RECONSTRUCT FENCE NOTES:

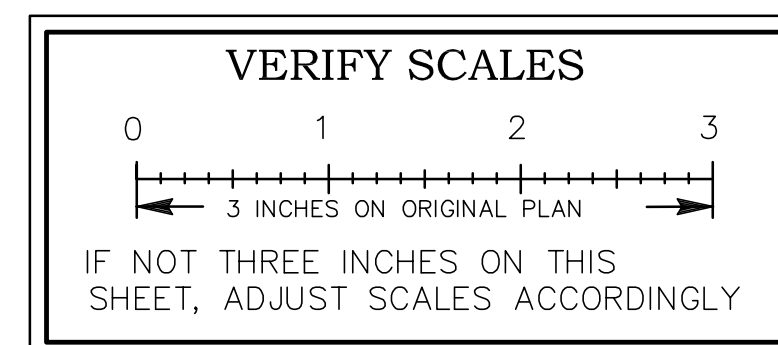
1. FOR DETAILS NOT SHOWN, SEE STATE STANDARD PLAN A85 AND A85B.
2. POST GREATER THAN 6" IN HEIGHT SHALL BE 4" STANDARD (10.8 LB/FT).
3. FENCE FABRIC SHALL BE 9 GAUGE WIRE.
4. FOUNDATIONS SHALL CONFORM TO THE 10' HEIGHT NON-SLATTED FENCE SIZES.



FENCE (TYPE CL-6, MOD) DETAIL
NOT TO SCALE

CONSTRUCTION NOTES:

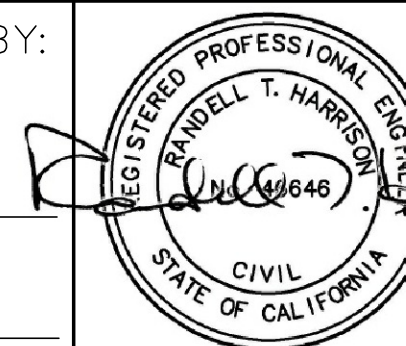
1. SEE IRRIGATION DETAILS ON SHEET C-5.
2. TRANSITION SLOPE FROM -1.5% TO +1.2% BETWEEN: STA "C" 10+53.6 AND STA "C" 10+77.3, STA "C" 11+31.5 AND STA "C" 11+53.



NO.	DATE	APPROV.	REVISION

DESIGNED: RTH
DRAWN: ESM
CHECKED: RTH
REVIEWED: RTH
DATE: 06-18-2023

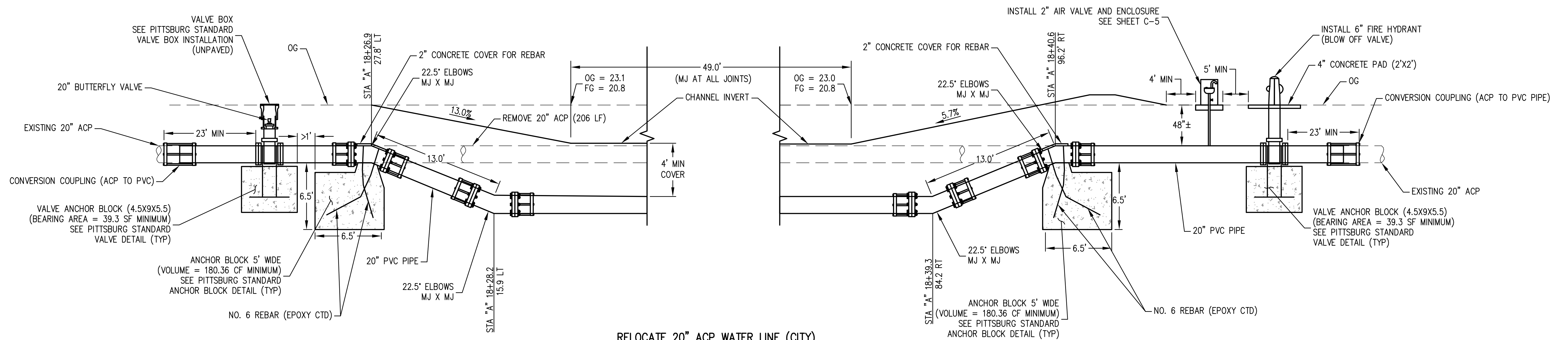
APPROVED BY:



HEI HARRISON ENGINEERING INC.
1987 BONIFACIO STREET • CONCORD, CA 94520
PHONE (925) 691-0450

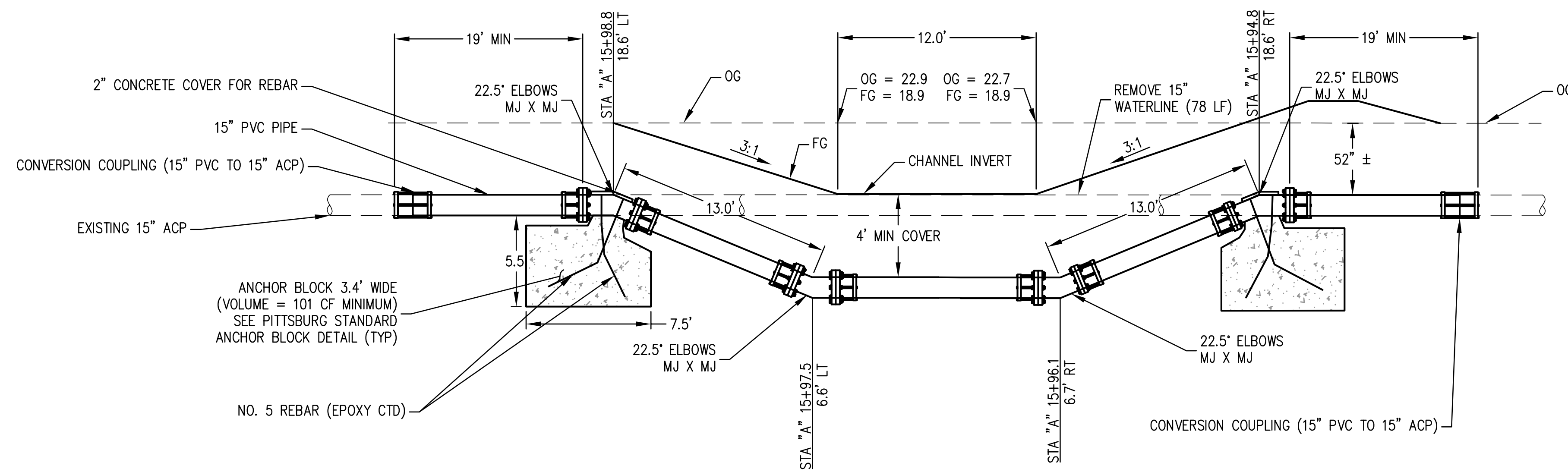


CITY OF PITTSBURG
AMERICANA PARK BYPASS CHANNEL
CONSTRUCTION DETAILS - SHEET C-3
SCALE: AS SHOWN
SHEET: 7 OF 11

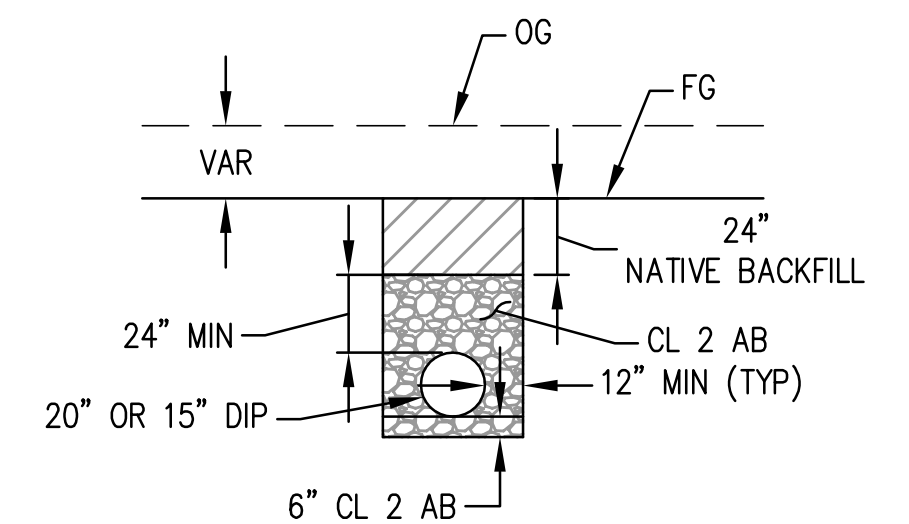


RELOCATE 20" ACP WATER LINE (CITY)
 (STA "A" 18+23.3 TO 18+45.8)
 NOT TO SCALE

- NOTES:**
- MECHANICAL JOINTS REQUIRED.
 - WRAP PIPE AND FITTING WITH POLYETHYLENE SHEETING.
 - THE 15" LINE AND THE 20" APC WATER LINE CAN BE SHUT DOWN FOR UP TO 8 HOURS. CONTRACTOR MUST COORDINATE SHUTDOWN AT LEAST 2 WEEKS IN ADVANCE OF ANY WATERLINE WORK.
 - ALL FITTINGS SHALL BE EPOXY COATED.
 - 20-INCH PVC WATERLINE SHALL BE SANITIZED.
 - WATERLINES SHALL BE PRESSURE TESTED.



RELOCATE 15" WATER LINE (POWER PLANT)
 (STA "A" 15+92.6 TO 16+01.0)
 NOT TO SCALE

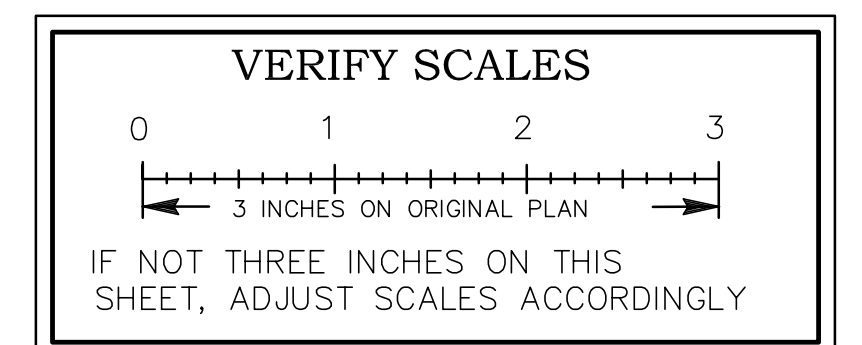


TRENCH SECTION
 NOT TO SCALE

CONTACT INFO:
 15" WATERLINE
 JOE MAURA
 O&M MANAGER
 CELL: 925-324-3512
 OFFICE: 925-779-6685

LAWRENCE PENN
 PLANT MANAGER
 CELL: 925-597-7757
 OFFICE: 925-427-3583

CONTACT INFO:
 20" ACP WATERLINE (CITY OF PITTSBURG)
 CHAD JOAQUIN
 LEAD WORKER
 925-382-5235



NO.	DATE	APPROV.	REVISION

DESIGNED: RTH
 DRAWN: ESM
 CHECKED: RTH
 REVIEWED: RTH
 DATE: 06-18-2023

APPROVED BY:



City Engineer
 Date:

HEI HARRISON ENGINEERING INC.
 1987 BONIFACIO STREET • CONCORD, CA 94520
 PHONE (925) 691-0450



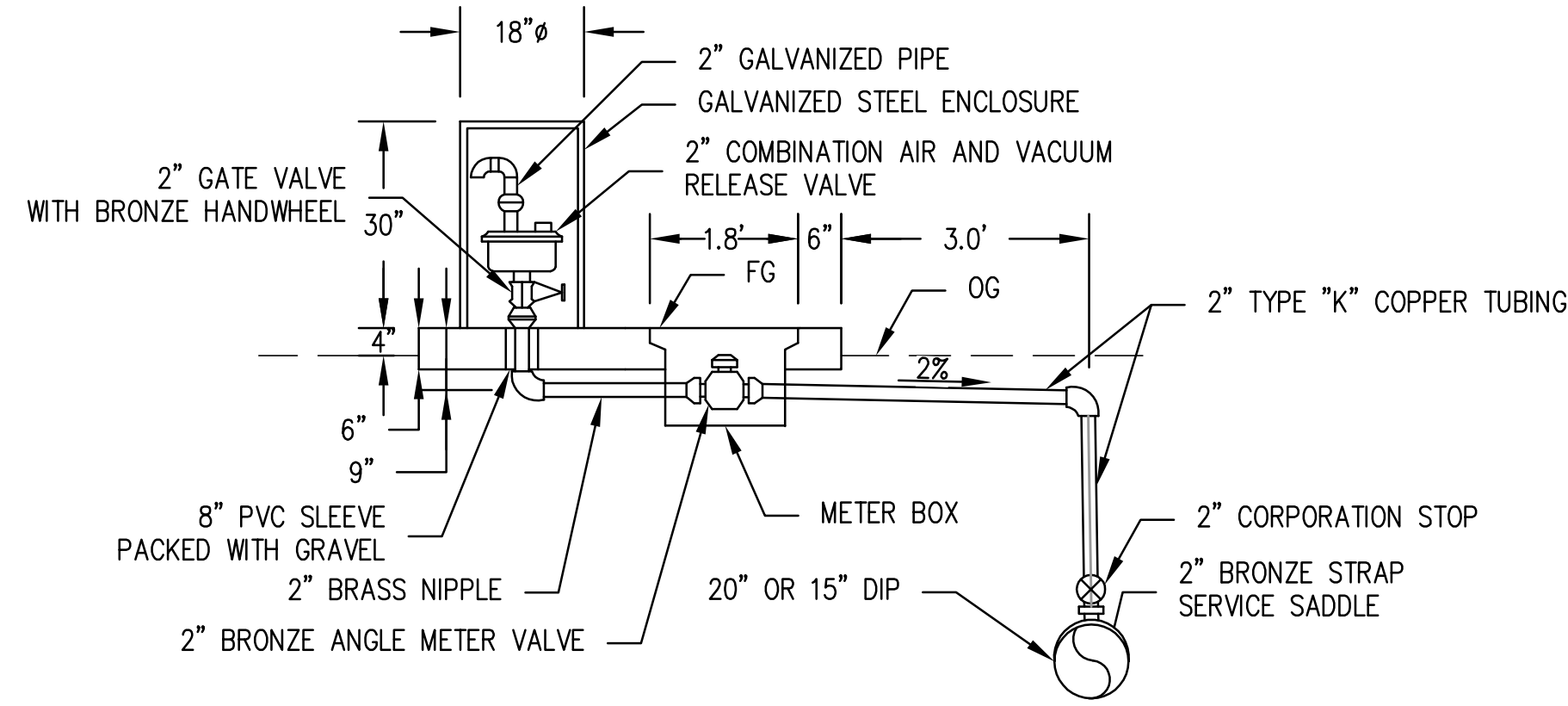
CITY OF PITTSBURG
 AMERICANA PARK BYPASS CHANNEL

CONSTRUCTION DETAILS - WATERLINES

SHEET C-4

SCALE: AS SHOWN
 SHEET: 8 OF 11

NOTES:
 1. FOR DETAILS NOT SHOWN SEE CITY OF PITTSBURG STANDARD DETAILS W-9.

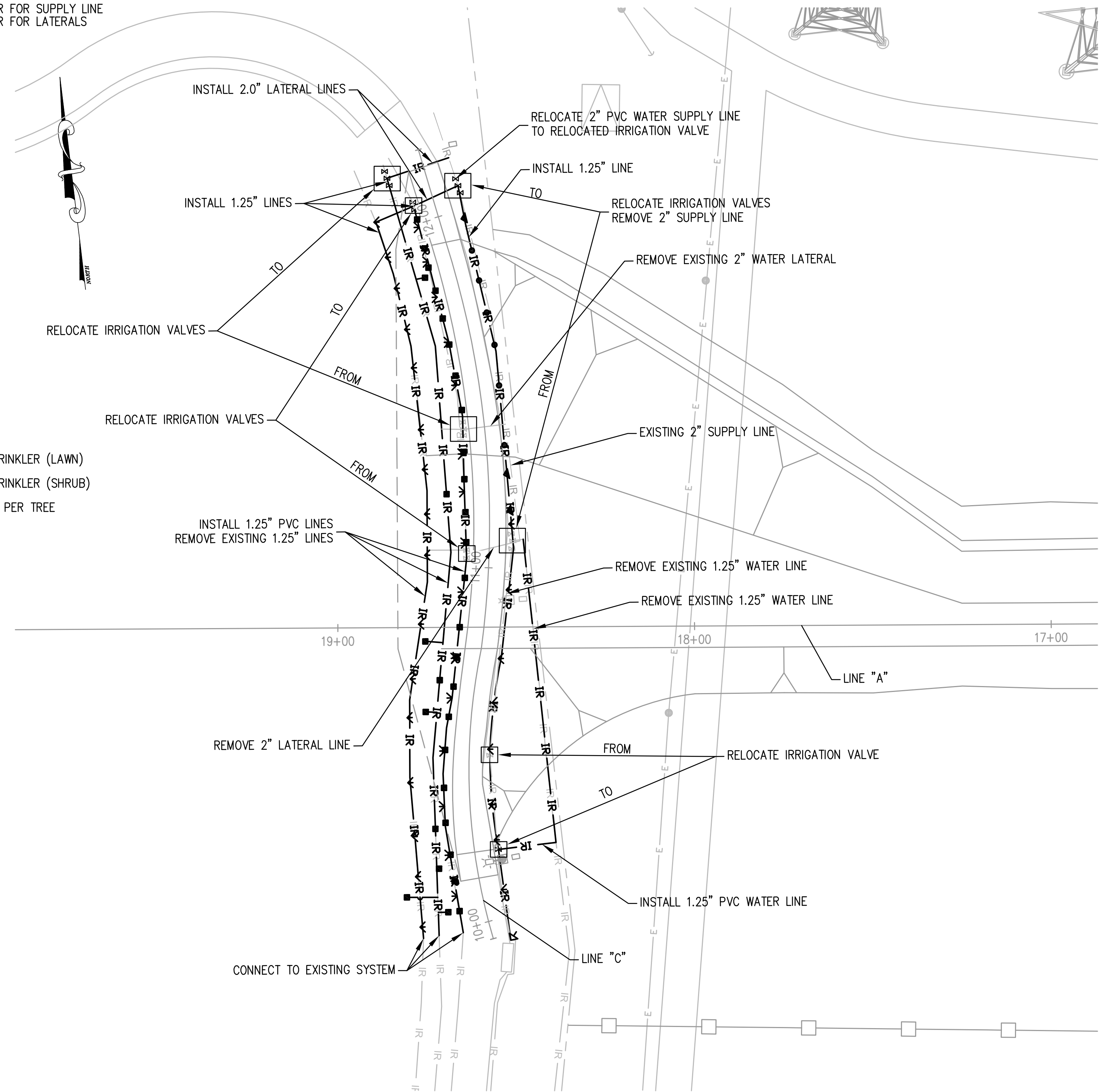


MODIFIED 1" AND 2" COMBINATION AIR VALVE ASSEMBLY (NOTE 1)
 NOT TO SCALE

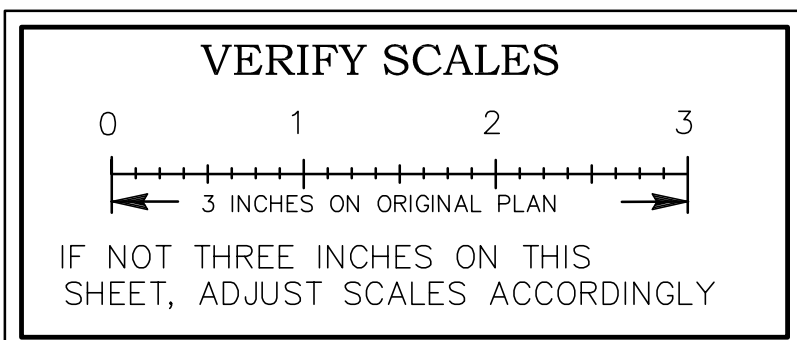
IRRIGATION NOTES:
 1. MIN 18" COVER FOR SUPPLY LINE
 2. MIN 12" COVER FOR LATERALS

IRRIGATION LEGEND

- IR — IR — IRRIGATION LINE
- IR — IR — EXISTING IRRIGATION LINE
- RAIN BIRD POP-UP SPRAY SPRINKLER (LAWN)
- ▼ RAIN BIRD POP-UP SPRAY SPRINKLER (SHRUB)
- RAIN BIRD BUBBLER (TREE), 2 PER TREE



MODIFY IRRIGATION SYSTEM PLAN
 SCALE 1"=20'



NO.	DATE	APPROV.	REVISION

DESIGNED: RTH
 DRAWN: ESM
 CHECKED: RTH
 REVIEWED: RTH
 DATE: 06-18-2023

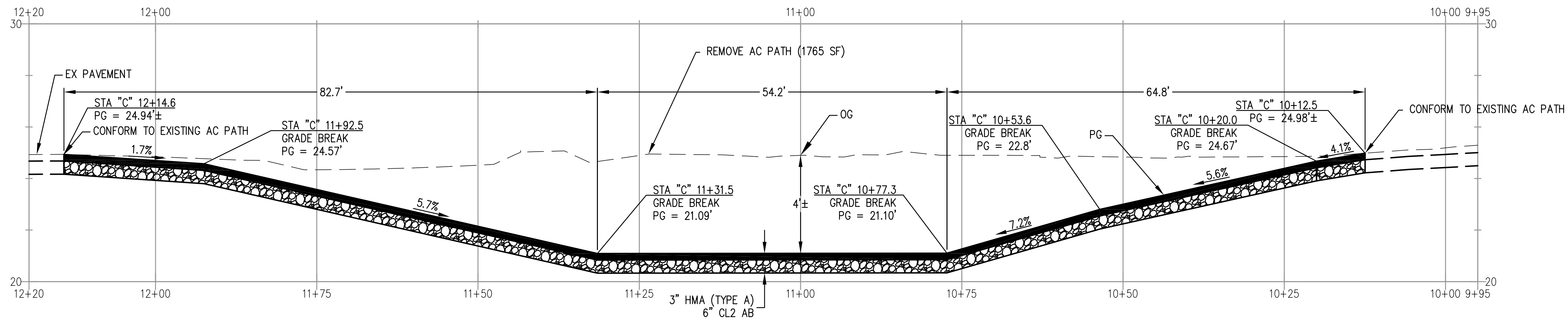
APPROVED BY:
 City Engineer
 Date:



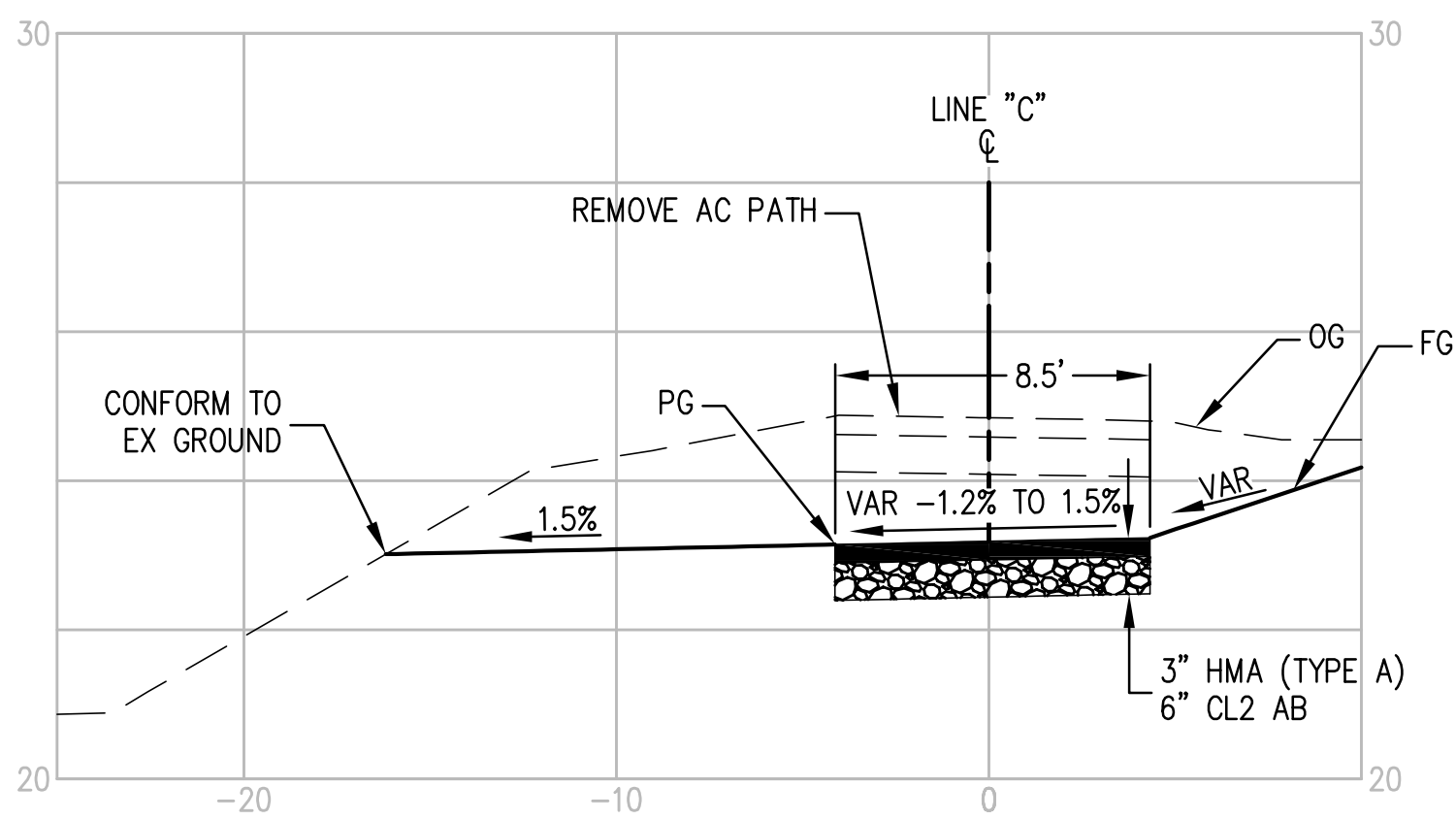
HEI HARRISON ENGINEERING INC.
 1987 BONIFACIO STREET • CONCORD, CA 94520
 PHONE (925) 691-0450



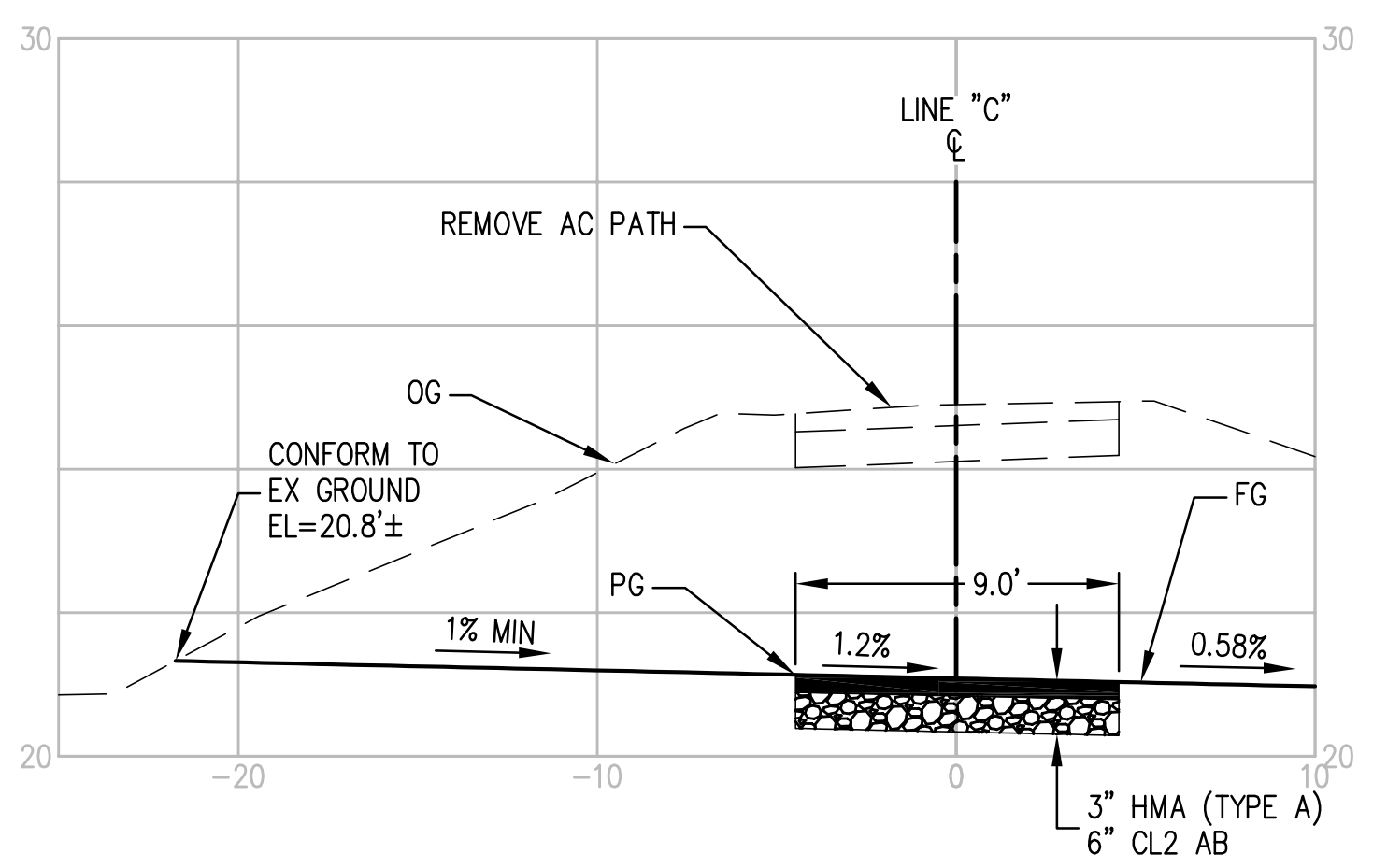
CITY OF PITTSBURG
 AMERICANA PARK BYPASS CHANNEL
 CONSTRUCTION DETAILS AND IRRIGATION PLAN SHEET C-5 SCALE: AS SHOWN SHEET: 9 OF 11



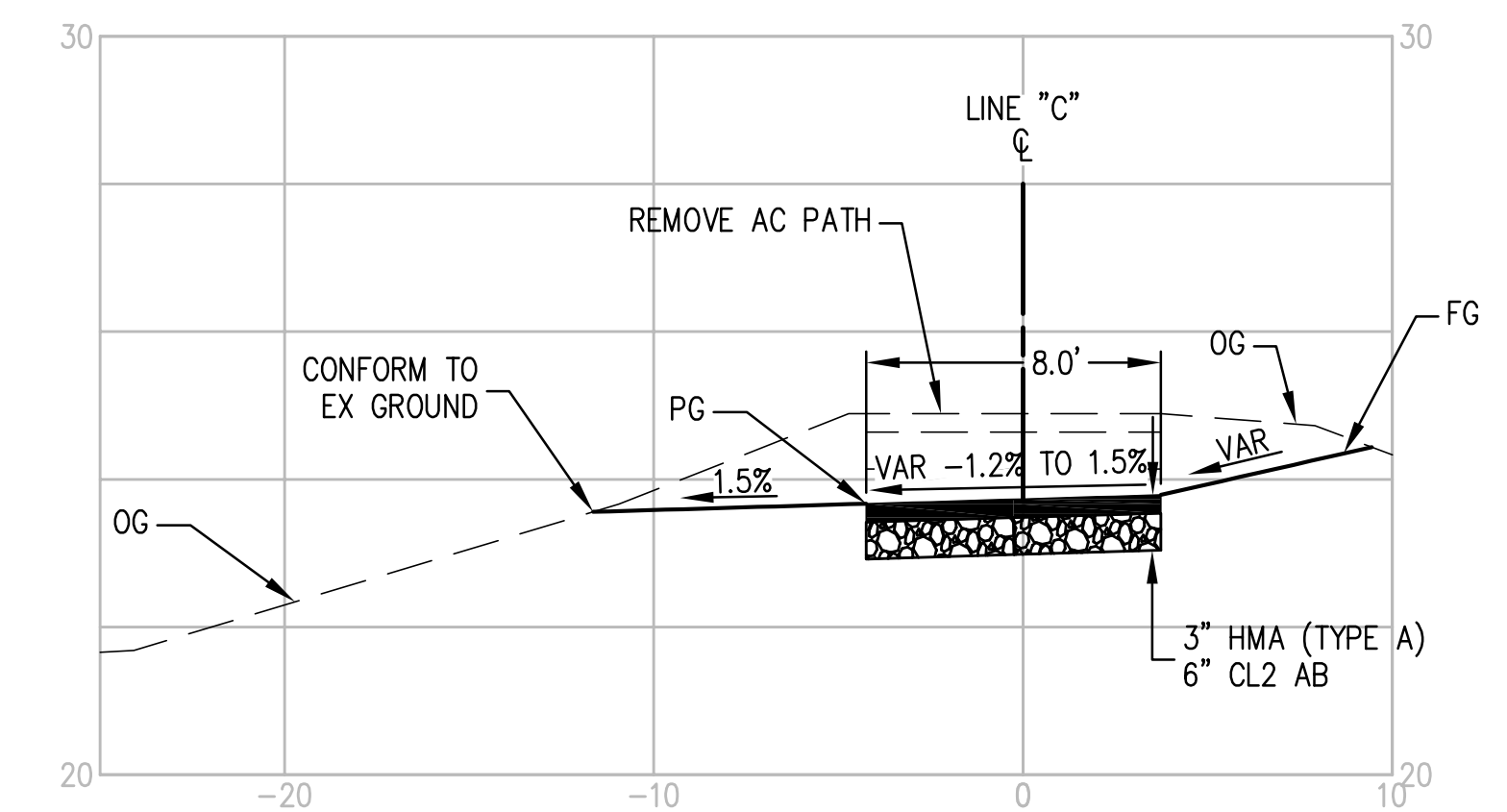
HMA WALKWAY PROFILE
(STA "C" 10+12.5 TO 12+14.6)
 SCALE: 1"=10'
 V:H = 1:4



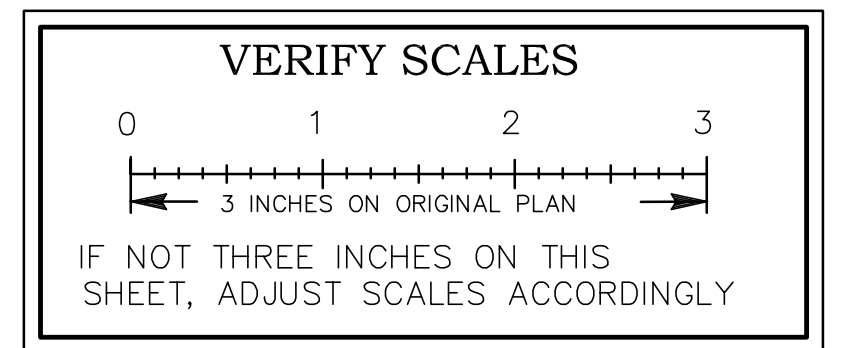
HMA WALKWAY
(STA "C" 10+12.5 TO STA 10+77.3)
 SCALE: 1"=5'
 V:H = 1:2



HMA WALKWAY
(STA "C" 10+77.3 TO STA 11+31.5)
 SCALE: 1"=5'
 V:H = 1:2



HMA WALKWAY
(STA "C" 11+31.5 TO STA 12+14.6)
 SCALE: 1"=5'
 V:H = 1:2



NO.	DATE	APPROV.	REVISION

DESIGNED: RTH
 DRAWN: ESM
 CHECKED: RTH
 REVIEWED: RTH
 DATE: 06-18-2023

APPROVED BY:
 City Engineer
 Date:



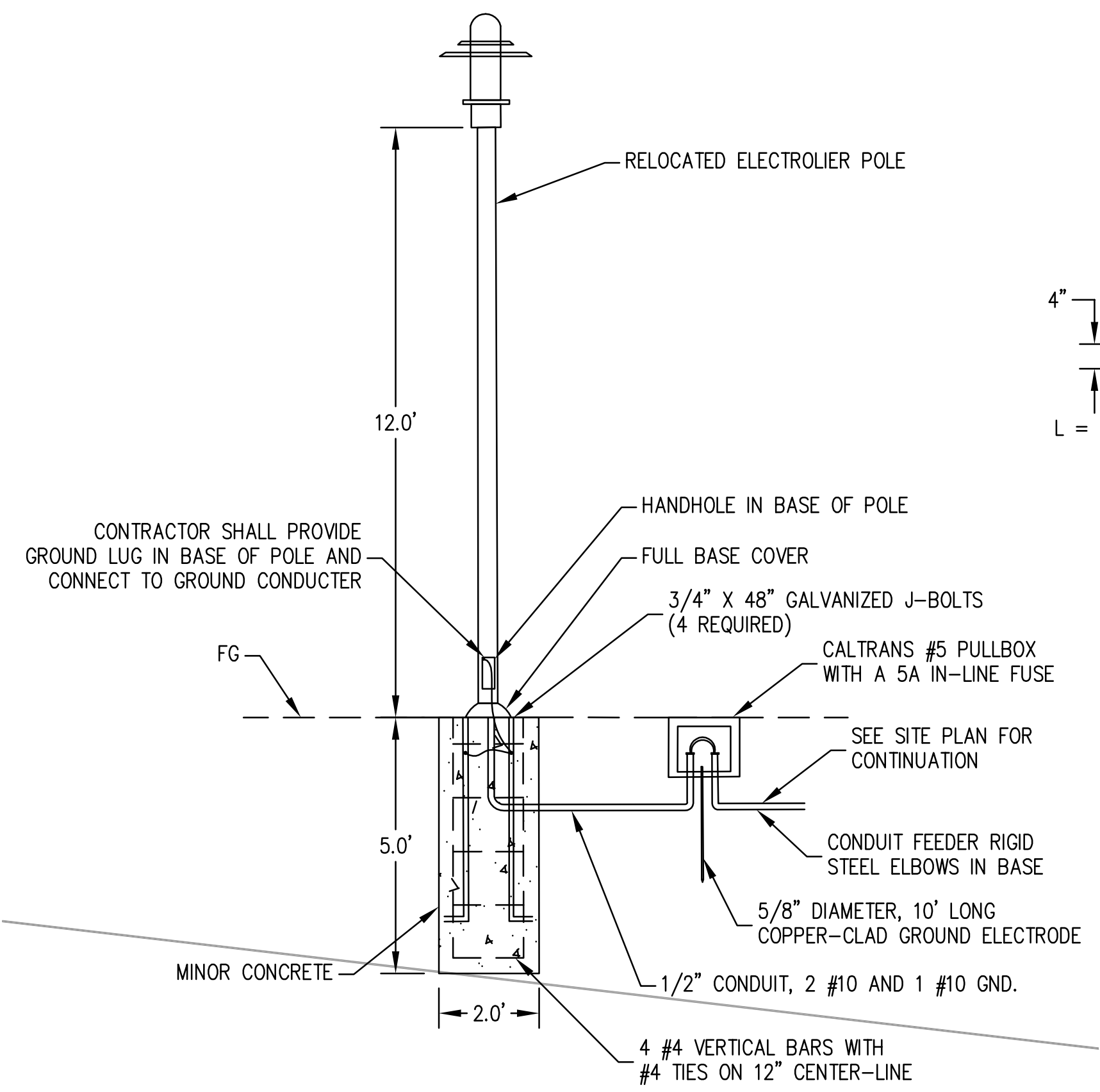
HEI HARRISON ENGINEERING INC.
 1987 BONIFACIO STREET • CONCORD, CA 94520
 PHONE (925) 691-0450



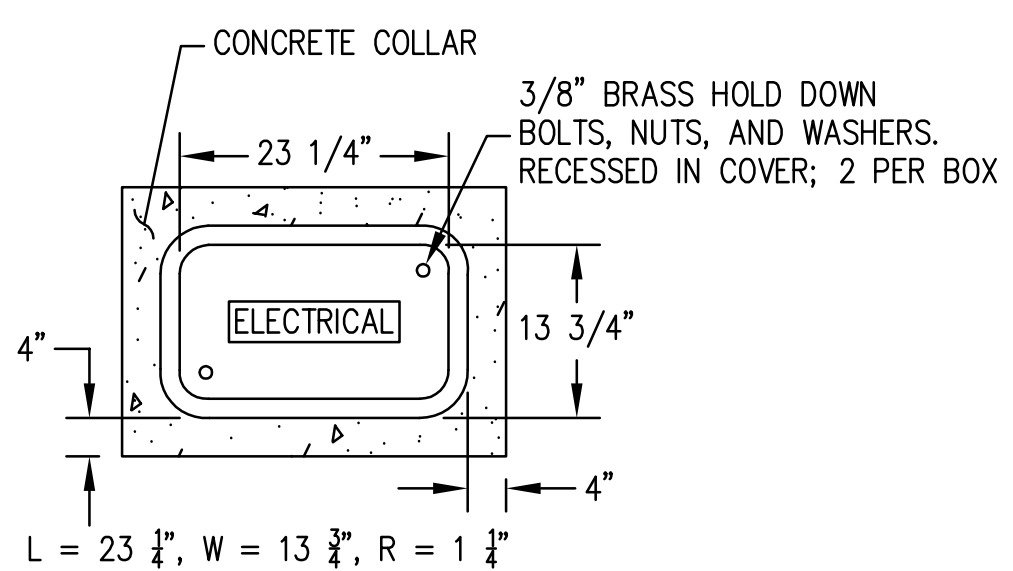
CITY OF PITTSBURG

AMERICANA PARK BYPASS CHANNEL

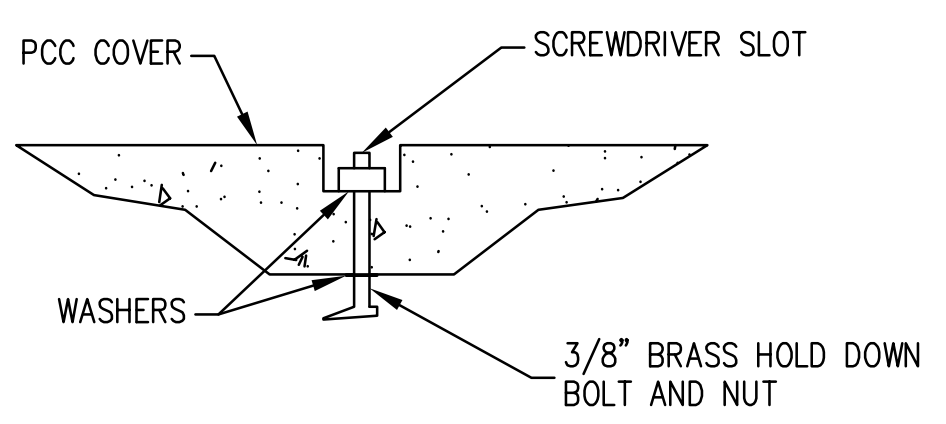
CONSTRUCTION DETAILS-- HMA WALKWAY	SHEET C-6	SCALE: AS SHOWN SHEET: 10 OF 11
---------------------------------------	--------------	------------------------------------



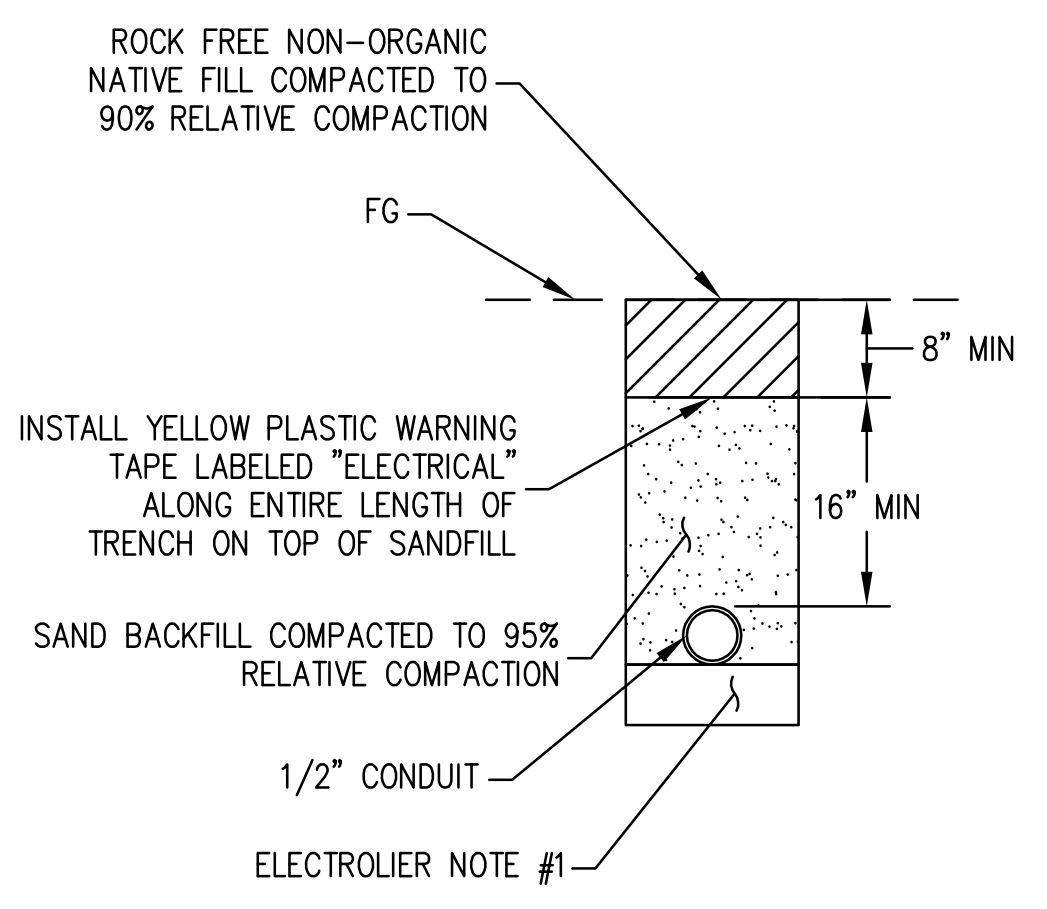
ELECTROLIER POST DETAIL
NOT TO SCALE



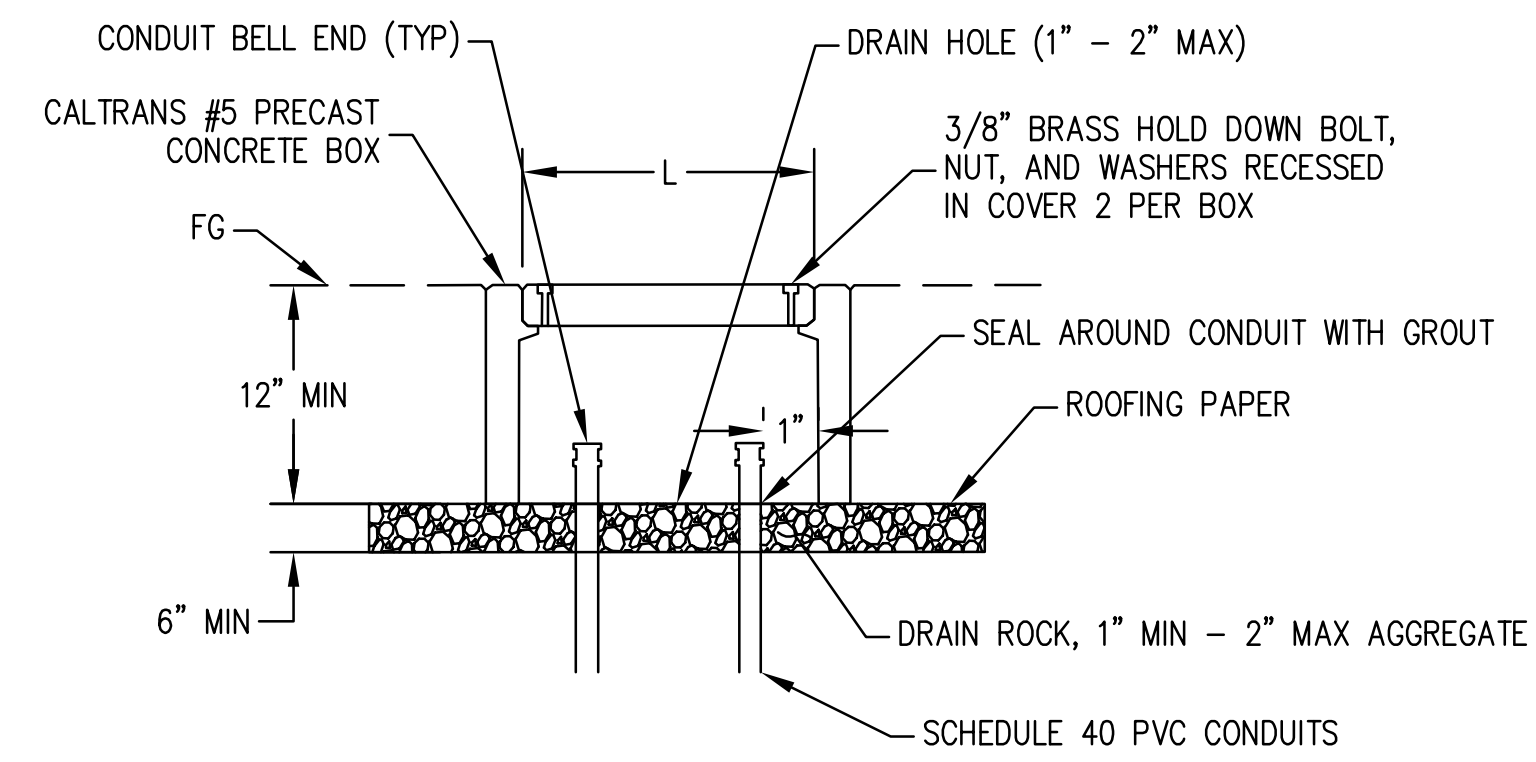
CALTRANS #5 PULLBOX
NOT TO SCALE



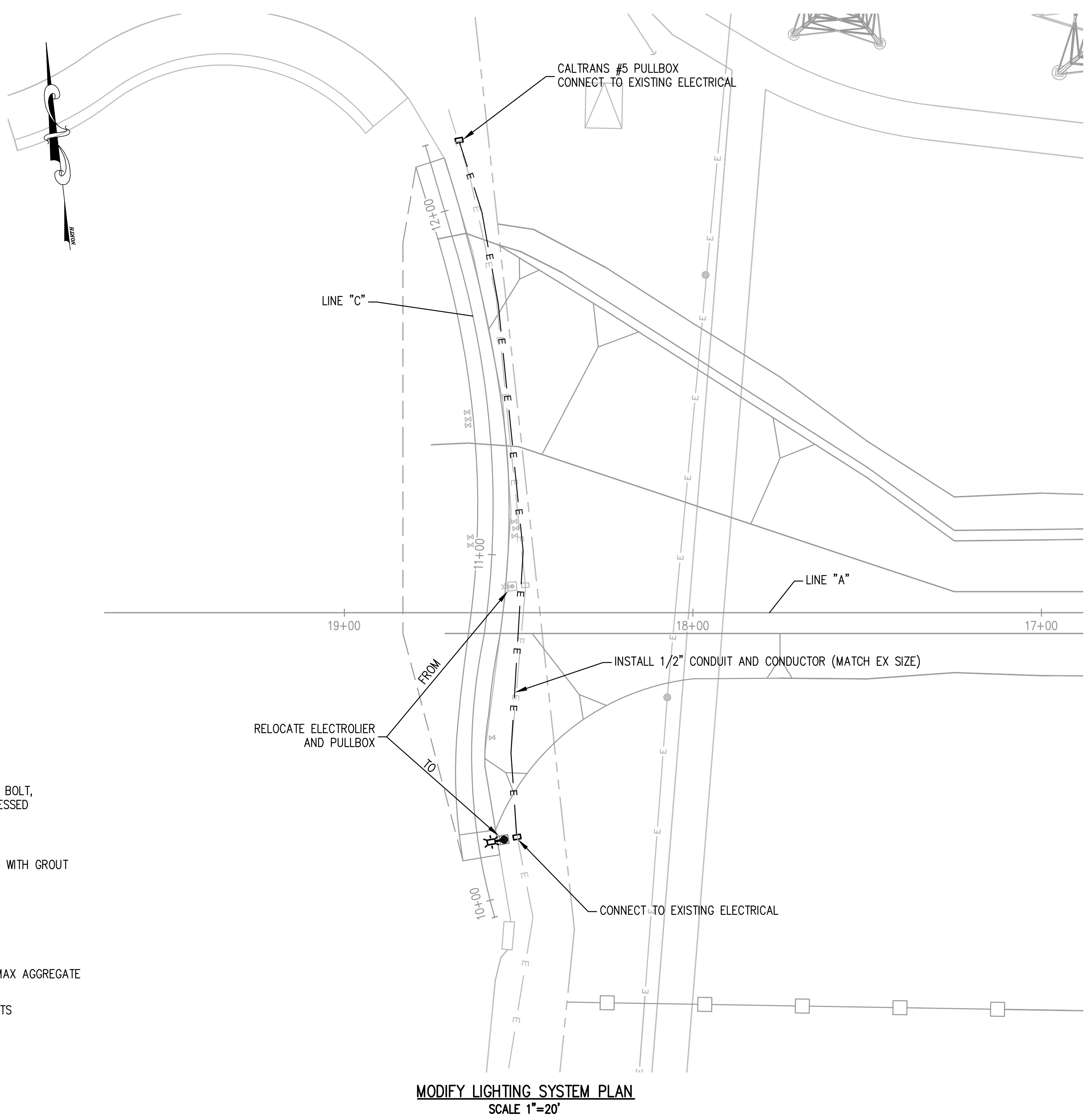
HOLD DOWN BOLT DETAIL
NOT TO SCALE



CONDUIT TRENCH DETAIL
NOT TO SCALE

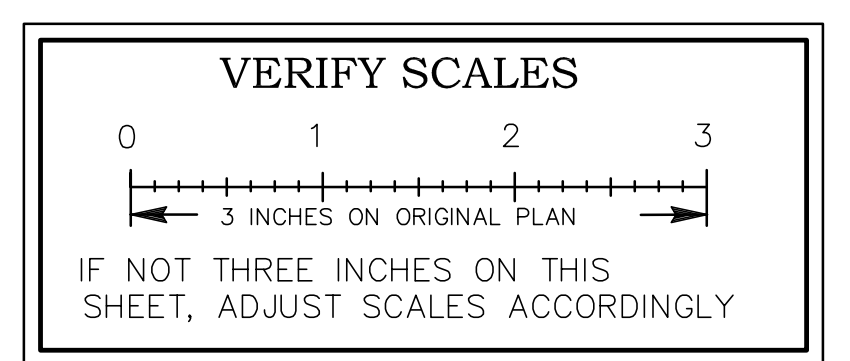


TYP. PULLBOX DETAIL
NOT TO SCALE



MODIFY LIGHTING SYSTEM PLAN
SCALE 1"=20'

ELECTROLIER NOTES:
1. ADD 4" TO DEPTH OF TRENCH FOR SAND BEDDING IF THE SOIL IS NOT ROCK FREE. FIELD CONDITION SHALL BE DETERMINED BY THE ENGINEER ON SITE.



NO.	DATE	APPROV.	REVISION

DESIGNED: RTH
DRAWN: ESM
CHECKED: RTH
REVIEWED: RTH
DATE: 06-18-2023

APPROVED BY: _____
City Engineer
Date: _____

HEI HARRISON ENGINEERING INC.
1987 BONIFACIO STREET • CONCORD, CA 94520
PHONE (925) 691-0450



CITY OF PITTSBURG
AMERICANA PARK BYPASS CHANNEL

LIGHTING PLAN

SHEET E-1

SCALE: AS SHOWN
SHEET: 11 OF 11