



## Quarterly Report on Sales Tax and Business Activity

### Top 25 Sales Tax Remitters

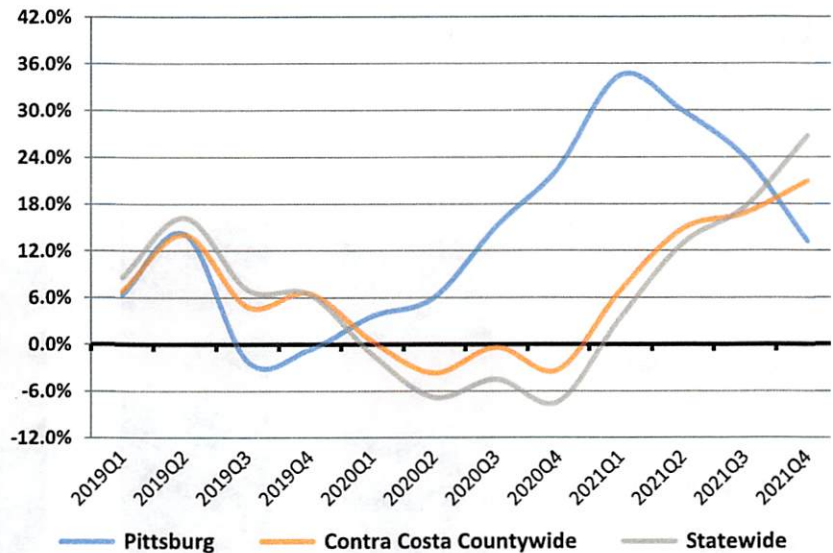
- ALL STAR FORD
- ALL STAR HYUNDAI
- ANTIOCH BUILDING MATERIALS CO.
- ARCO AM/PM MINI MARTS
- BOMBARDIER TRANSIT CORPORATION
- BURLINGTON COAT FACTORY
- CONTRA COSTA COUNTY PUBLIC AUTO AUCTION
- FERGUSON ENTERPRISES
- FLUENCE ENERGY
- GRANITE EXPO OUTLET
- HOME DEPOT
- ISCO INDUSTRIES
- KORTICK MANUFACTURING CO.
- MERIT USA
- PRAXAIR
- ROOFLINE SUPPLY & DELIVERY
- ROSS STORES
- SHELL SERVICE STATIONS
- TARGET STORES
- UNIVAR SOLUTIONS USA
- WAL MART STORES
- WINCO FOODS
- WINTER CHEVROLET
- WINTER HONDA
- YC AUTO GROUP

### 4th Quarter 2021 in Review

California sales tax cash receipts increased by 25.5% from the same quarter last year. In this jurisdiction sales tax cash receipts decreased by 3.6% from the same quarter last year due to a decrease of \$13,115,000 in Taxable Sales.

Cash Receipts	Quarter	Annual
<b>Pittsburg</b>	-3.6%	13.2%
<b>Contra Costa Countywide Pool</b>	-4.6%	0.6%
<b>Contra Costa Countywide</b>	12.8%	20.9%
<b>S.F. Bay Area Region</b>	20.3%	20.7%
<b>Statewide</b>	25.5%	26.7%

### Annualized Percent Change in Sales Tax Cash Receipts



### Business Activity

- General Retail
- Food Products
- Transportation
- Construction
- Business To Business
- TOTAL LOCAL BUSINESS ACTIVITY**
- COUNTYWIDE POOL ACTIVITY**

Pittsburg		California	
Quarter	Annual	Quarter	Annual
1.3%	15.0%	21.4%	26.9%
10.3%	13.1%	26.1%	17.6%
-31.9%	-1.7%	13.2%	18.1%
9.6%	45.9%	-2.7%	3.0%
55.8%	32.1%	1.9%	3.0%
<b>-3.8%</b>	<b>17.2%</b>	<b>14.1%</b>	<b>15.6%</b>
<b>-18.6%</b>	<b>-6.0%</b>	<b>3.4%</b>	<b>9.0%</b>



## News

- Economic Activity:** Real Gross Domestic Product (GDP) grew at a seasonally adjusted annualized rate of 7.0% in the fourth quarter of 2021. Real GDP in Q4 2021 surpassed its Q4 2019 pre-pandemic peak by 6.4%. U.S. inflation accelerated to 7.0% in December of 2021, while California's inflation, accelerated from 5.6% in October of 2021 to 6.5% year-over-year in December of 2021. (BEA, February Finance Bulletin)
- Employment:** The U.S. unemployment rate averaged 5.4% in 2021. California's unemployment rate decreased to 6.5% in December of 2021, bringing the 2021 average unemployment rate to 7.7%. (February Finance Bulletin )
- Personal Income:** U.S. personal income increased by 7.2% for the fourth quarter of 2021, compared to same quarter previous year. (BEA)

## Pittsburg

### Annual Per Capita Sales Tax

Adjusted for Inflation

(Constant 2017 \$)

