



Quarterly Report on Sales Tax and Business Activity

Top 25 Sales Tax Remitters

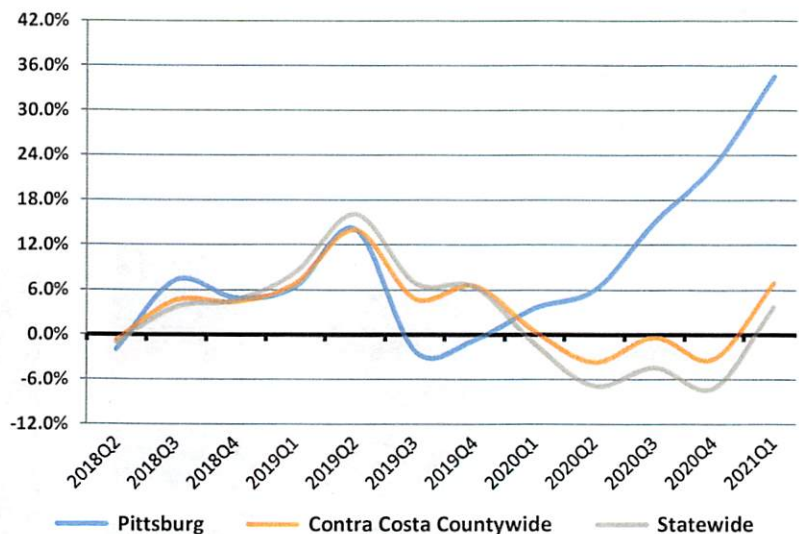
ALL STAR FORD
 ALL STAR HYUNDAI
 ANTIOCH BUILDING MATERIALS CO.
 ARCO AM/PM MINI MARTS
 BOMBARDIER TRANSIT CORPORATION
 BURLINGTON COAT FACTORY
 CALPINE OPERATING SVCS CO
 CONTRA COSTA COUNTY PUBLIC AUTO AUCTION
 CORPORATE FLEET SALES
 FERGUSON ENTERPRISES
 FLUENCE ENERGY
 HOME DEPOT
 KORTICK MANUFACTURING CO.
 MERIT USA
 PRAXAIR
 ROOFLINE SUPPLY & DELIVERY
 ROSS STORES
 SAFEWAY STORES
 SHELL SERVICE STATIONS
 TARGET STORES
 UNITED RENTALS
 WAL MART STORES
 WINCO FOODS
 WINTER CHEVROLET
 WINTER HONDA

1st Quarter 2021 in Review

California sales tax cash receipts increased by 33.8% from the same quarter last year. In this jurisdiction sales tax cash receipts increased by 67.3% from the same quarter last year due to a increase of \$141,768,000 in Taxable Sales.

Cash Receipts	Quarter	Annual
Pittsburg	67.3%	34.5%
Contra Costa Countywide Pool	17.6%	33.0%
Contra Costa Countywide	33.4%	6.9%
S.F. Bay Area Region	23.8%	-2.4%
Statewide	33.8%	3.7%

Annualized Percent Change in Sales Tax Cash Receipts



Business Activity

	Pittsburg		S.F. Bay Area		California	
	Quarter	Annual	Quarter	Annual	Quarter	Annual
General Retail	26.1%	7.3%	-5.8%	-25.7%	5.4%	-16.8%
Food Products	7.3%	1.5%	-26.7%	-37.1%	-20.3%	-29.9%
Transportation	26.5%	21.1%	1.6%	-18.3%	-1.0%	-16.5%
Construction	163.3%	42.6%	-4.2%	-4.4%	-5.4%	-2.6%
Business To Business	25.6%	3.3%	-2.2%	-6.2%	-12.7%	-15.6%
TOTAL LOCAL BUSINESS ACTIVITY	45.8%	15.8%	-8.4%	-20.7%	-6.6%	-18.0%
COUNTYWIDE POOL ACTIVITY	47.5%	66.0%	16.9%	20.1%	33.7%	32.2%



News

- Economic Activity:** Real Gross Domestic Product (GDP) increased at an annual rate of 6.4% in the first quarter of 2021, reflecting the increasing pace of economic recovery, reopening of establishments, and continued government stimulus response related to the COVID-19 pandemic. (BEA, April 2021)
- Employment:** The U.S. unemployment rate fell from 6.3% in January to 6.2% in February 2021, remaining 2.7% higher than a year ago. There were 4.2 million fewer Americans in the labor force in February 2021 than in February 2020. California’s unemployment rate decreased to 9.0% in January, down from 9.3% in December, but 4.7% higher than February 2020’s pre-pandemic rate of 4.3%. (Finance Bulletin, March 2021)
- Personal Income:** U.S. personal income increased by 5.2% in the first quarter of 2021, compared to same quarter previous year. This increase was after a 4.0% growth in the fourth quarter 2020. The increase in personal income for the first quarter of 2021, was due to the surge of government social benefits to persons by \$950 Billion dollars. (BEA, April 2021)

Pittsburg

Annual Per Capita Sales Tax

Adjusted for Inflation

(Constant 2017 \$)

