



## Quarterly Report on Sales Tax and Business Activity

### Top 25 Sales Tax Remitters

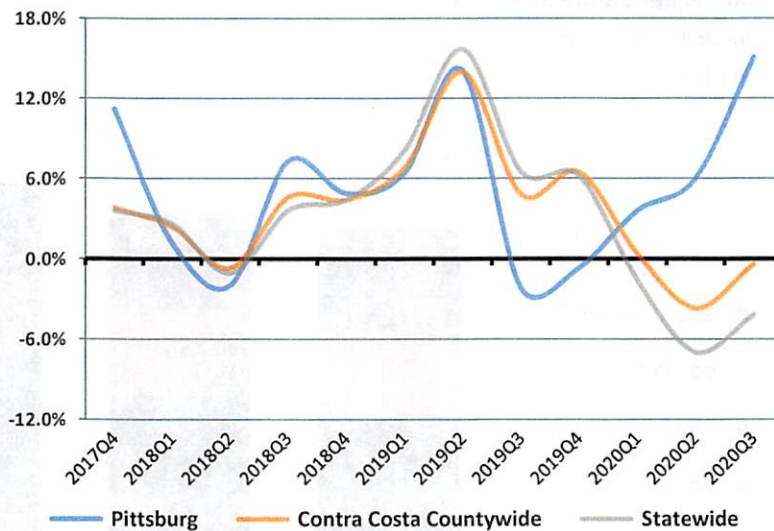
- AGRA TECH
- ALL STAR FORD
- ALL STAR HYUNDAI
- ANTIOCH BUILDING MATERIALS CO.
- ARCO AM/PM MINI MARTS
- BURLINGTON COAT FACTORY
- CALPINE OPERATING SVCS CO
- CONTRA COSTA COUNTY PUBLIC AUTO AUCTION
- CORPORATE FLEET SALES
- ELITE ROOFING SUPPLY
- FERGUSON ENTERPRISES
- GRANITE EXPO OUTLET
- HOME DEPOT
- KORTICK MANUFACTURING CO.
- MERIT USA
- PRAXAIR
- ROSS STORES
- SAFEWAY STORES
- SHELL SERVICE STATIONS
- TARGET STORES
- UNITED RENTALS
- WAL MART STORES
- WINCO FOODS
- WINTER CHEVROLET
- WINTER HONDA

### 3rd Quarter 2020 in Review

California sales tax cash receipts increased by 1.1% from the same quarter last year. In this jurisdiction sales tax cash receipts increased by 14.5% from the same quarter last year due to a increase of \$39,889,000 in Taxable Sales.

Cash Receipts	Quarter	Annual
<b>Pittsburg</b>	14.5%	15.1%
<b>Contra Costa Countywide Pool</b>	41.6%	37.3%
<b>Contra Costa Countywide</b>	4.0%	-0.4%
<b>S.F. Bay Area Region</b>	-4.7%	-6.7%
<b>Statewide</b>	1.1%	-4.2%

### Annualized Percent Change in Sales Tax Cash Receipts



### Business Activity

	Pittsburg		S.F. Bay Area		California	
	Quarter	Annual	Quarter	Annual	Quarter	Annual
General Retail	4.8%	-6.3%	-25.4%	-22.0%	-14.2%	-13.6%
Food Products	2.4%	-1.9%	-37.5%	-24.3%	-28.1%	-18.4%
Transportation	-4.7%	-10.6%	-24.2%	-20.3%	-12.8%	-12.1%
Construction	-3.4%	0.4%	-12.6%	-6.9%	-12.1%	-2.8%
Business To Business	-29.7%	8.2%	-12.8%	-9.0%	-13.6%	-9.3%
<b>TOTAL LOCAL BUSINESS ACTIVITY</b>	<b>-5.1%</b>	<b>-3.9%</b>	<b>-24.0%</b>	<b>-18.0%</b>	<b>-16.7%</b>	<b>-12.4%</b>
<b>COUNTYWIDE POOL ACTIVITY</b>	<b>55.8%</b>	<b>61.3%</b>	<b>28.8%</b>	<b>23.1%</b>	<b>40.5%</b>	<b>28.4%</b>





## News

- Economic Activity:** U.S. real GDP grew at a record-high 33.1% in the third quarter of 2020. The growth was driven by personal consumption expenditures (PCE) increasing by .5% from September. The \$63.5 billion increase in PCE for October reflected increases of \$13.2 billion in spending for goods and \$50.3 billion in spending for services. (CDTFA Finance Bulletin, November 2020)
- Employment:** California's unemployment rate improved to 11.0% in September, a .4% decrease from previous month. California's labor force is still 839,000 fewer in September than in February of this year. The total labor force currently is 1,870,900. The U.S. unemployment rate declined for the sixth consecutive month to 6.9% in October. The U.S. labor force participation rate rose by 0.3% to 61.7%, and civilian employment rose to 149.8 million in October. (CDTFA Finance Bulletin, November 2020)

## Pittsburg

### Annual Per Capita Sales Tax

Adjusted for Inflation

(Constant 2016 \$)

