



Quarterly Report on Sales Tax & Business Activity

TOP 25 BUSINESSES IN ALPHABETICAL ORDER:

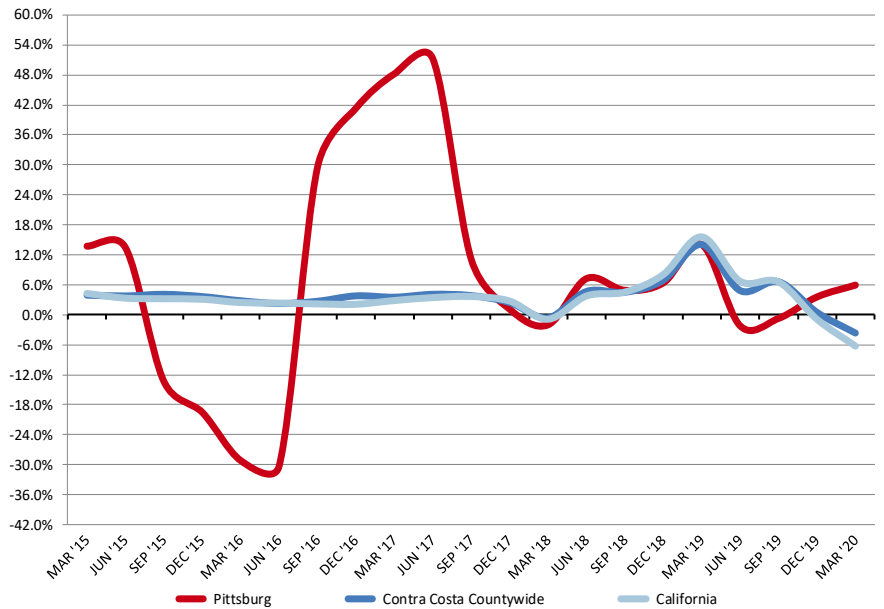
- AGRA TECH
- ALL STAR FORD
- ALL STAR HYUNDAI
- ANTIOCH BUILDING MATERIALS
- ARCO AM/PM MINI MARTS
- BURLINGTON COAT FACTORY
- CONTRA COSTA AUTO AUCTION
- CORPORATE FLEET SALES
- FERGUSON ENTERPRISES
- GRANITE EXPO OUTLET
- HOME DEPOT
- MERIT USA
- MOBIL SERVICE STATIONS
- OLIVE GARDEN RESTAURANT
- PRAXAIR
- ROSS STORES
- SHELL SERVICE STATIONS
- T-MOBILE
- TARGET STORES
- UNION 76 SERVICE STATIONS
- UNITED RENTALS
- WAL MART STORES
- WINCO FOODS
- WINTER CHEVROLET
- WINTER HONDA

2nd Quarter 2020 in Review

Business Activity	Quarter over Quarter			Year over Year		
	Pittsburg	S.F. Bay Area	California	Pittsburg	S.F. Bay Area	California
TOTAL	-9.2%	-29.6%	-26.7%	-3.1%	-11.9%	-10.6%
GENERAL RETAIL	-14.4%	-46.4%	-32.8%	-7.2%	-16.9%	-12.4%
FOOD PRODUCTS	-10.5%	-37.8%	-32.9%	-3.0%	-14.7%	-12.3%
TRANSPORTATION	-18.8%	-38.3%	-29.0%	-10.5%	-18.6%	-13.1%
CONSTRUCTION	-21.5%	-18.8%	-10.7%	0.0%	-6.9%	-5.3%
BUSINESS TO BUSINESS	38.4%	-12.7%	-21.6%	17.9%	-8.0%	-8.3%
Auto Sales - New	0.2%	-30.0%	-20.3%	-8.9%	-19.7%	-12.9%
Restaurants	-16.0%	-46.7%	-40.6%	-4.1%	-18.3%	-15.5%
Service Stations	-41.9%	-55.0%	-48.0%	-18.5%	-21.9%	-17.6%
Department Stores	15.3%	-33.3%	-19.1%	3.7%	-10.7%	-6.7%
Bldg.Matls-Retail	-28.1%	-24.2%	-3.0%	0.9%	-8.1%	-2.4%
Bldg.Matls-Whsle	-14.9%	-10.3%	-16.2%	-1.0%	-5.1%	-7.3%
Food Markets	-3.8%	-13.3%	-14.8%	-2.4%	-4.0%	-4.3%
Heavy Industry	181.1%	-25.7%	-19.4%	68.5%	-12.4%	-8.6%
Chemical Products	-15.2%	-49.9%	-23.2%	-7.4%	-21.1%	-8.7%
Miscellaneous Retail	-24.5%	-23.4%	-40.2%	-10.9%	-9.6%	-16.7%
Apparel Stores	-13.8%	-31.2%	-62.0%	-1.3%	-9.5%	-22.5%
Auto Sales - Used	-24.1%	-37.1%	-22.1%	-1.8%	-14.3%	-9.3%
Auto Parts/Repair	43.9%	-19.8%	-20.5%	19.1%	-11.4%	-6.6%
Leasing	-73.1%	-71.2%	-32.9%	-25.4%	-25.0%	-11.5%

Change in Gross 1% Cash Sales Tax 2020Q2 over 2019Q2	
LEASING	113,164
RESTAURANTS	71,974
AUTO SALES - USED	61,372
CHEMICAL PRODUCTS	47,602
DEPARTMENT STORES	35,808
OFFICE EQUIPMENT	(2,256)
HEALTH & GOVERNMENT	(2,749)
RECREATION PRODUCTS	(2,822)
APPAREL STORES	(8,356)
DRUG STORES	(8,543)
SERVICE STATIONS	(104,763)
BLDG.MATLS-RETAIL	(130,804)
All Other	147,682
Total Change	217,310

Annualized Change in Sales Tax Cash Receipts





News

- **Economic Activity:** For United States the GDP fell by 32.9% in the second quarter compared to the previous quarter. Excluding food and energy products the Personal Consumption Expenditures (PCE) for the second quarter 2020 was 13.7% lower than the previous year same quarter for United States. The Q2 PCE was 12.1% less than that of the previous quarter's PCE. (bea.gov)
- **California's Personal Income:** Personal income increased 34.2% at an annual rate in the second quarter 2020 an acceleration from the 4.1% increases in the first quarter. The personal income was \$2,878,729 (in millions). That is an increase of 6.5% compared to the 1st quarter of 2020 at \$2,702,965 (in millions). (bea.gov)
- **Employment in California:** Unemployment rate fell to 11.4% in August after reaching an average of 15.9% in the second quarter and a 13.5% rate in July. (CA DOF)

SALES TAX CAPTURE AND LEAKAGE ANALYSIS REPORT BENCHMARK YEAR

